

# **Indoor Temperature Standards for Outdoor Equipment Rooms**



## Indoor Temperature Standards for Outdoor Equipment Rooms



This document discusses ventilation standards for mechanical rooms as per ASHRAE guidelines. Mechanical rooms typically house equipment like air ...



ICC Digital Codes is the largest provider of model codes, custom codes and standards used worldwide to construct safe, sustainable, affordable and resilient structures.



With an outside dry bulb temperature of 30 oC, the diagram above indicates the the recommended inside dry bulb temperature should be approximately 26 oC and the recommended inside wet bulb ...



Indoor equipment installed inside a building or room and thus normally protected against the outdoor climatic conditions may be subjected to condensation due to rapid temperature changes and to ...



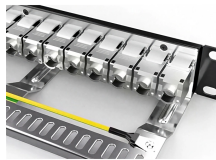
For outdoor workplaces, shade must be present when temperatures are greater than 80°F. When temperatures are less than 80°F, shade must be available upon request . Implement control ...



The national consensus standard for outside air ventilation is ASHRAE Standard 62.1-2010, Ventilation for Acceptable Indoor Air Quality and its published Addenda.



Learn about the new OSHA heat regulations for outdoor and indoor work settings. Discover how technology can help with compliance and promote workplace safety.



UFS are For Information Only (FIO) and exist to help users understand and apply UFC requirements. The purpose of UFS is to offer procedural guidance, best practices, lessons learned, examples, and ...



CBE Thermal Comfort tool to calculate thermal comfort according to ASHRAE Standard 55-2023, thermal comfort, PMV, PPD, SET, Adaptive comfort, Center for the Built Environment, CBE, UC ...



Explore California OSHA heat safety rules for indoor & outdoor workplaces. Learn thresholds, employer duties, and compliance tips.

## Contact Us

For more information, pricing, or custom network solutions, please contact us:

Website: <https://www.hashherbcafe.co.za>

Email: [hello@hashherbcafe.co.za](mailto:hello@hashherbcafe.co.za)

Phone: +27 63 814 7295

Address: 15 Galaxy Road, Linbro Business Park, Johannesburg, 2065, South Africa

This document is for informational purposes only. Specifications subject to change without notice.

