

# **Indoor Fiber Optic ODF Frame Fusion Splicing**



## Indoor Fiber Optic ODF Frame Fusion Splicing



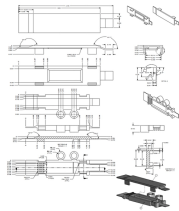
With a compact, modular frame, high-density plug-and-play elements, and full-frontal access, the FACT ODF systems innovative design reduces installation time and enhances system maintenance. The ...



Both systems have now been upgraded to support mass-fusion splicing, offering a variety of advantages for data center cabling. Mass-fusion ...



This guide provides a comprehensive engineering perspective on ODFs—beyond the basic “what is an ODF” explanation—covering structural design, fiber management, MPO/MTP ...



Generally, the ODF Optical Distribution Frame is a necessary part of the indoor optical cable management. 12 cores fusion splicing and distribution module plays the main role and its function is ...



These removable, compartmentalized trays house fiber splices (fusion or mechanical), protecting them from stress and contamination. Features: Anti-static materials, cushioning for splices, ...



Core functions — what an ODF actually does Keep the list short and practical: Terminate and protect incoming cables. Large multi-fiber cables are fed into the ODF and broken out into individual fibers or ...



This article compares fusion splicing and pre-terminated solutions on these terms, and reviews what's required in a hyperscale ODF in order to scale up to 5,000+ connections in a single frame.



DCX adapter frames and cassettes have a modular, compact design that allows for assembly of two (Base-24), four (Base-12), or six (Base-8) cassettes per housing tray. The DCX housing design ...



With modular jumper management plates and segmented jumper management hubs, a single 4m patchcord length allows patching from any port to any other port on the dual or single optical ...



Our compact, high-density, indoor Mass-Fusion Rack-Mount Splice Cabinets are perfect for data center interconnection applications.



Both systems have now been upgraded to support mass-fusion splicing, offering a variety of advantages for data center cabling. Mass-fusion splicing significantly reduces installation time and ...

## Contact Us

For more information, pricing, or custom network solutions, please contact us:

Website: <https://www.hashherbcafe.co.za>

Email: [hello@hashherbcafe.co.za](mailto:hello@hashherbcafe.co.za)

Phone: +27 63 814 7295

Address: 15 Galaxy Road, Linbro Business Park, Johannesburg, 2065, South Africa

This document is for informational purposes only. Specifications subject to change without notice.

