

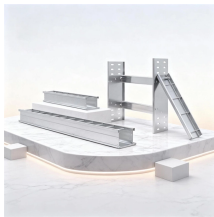
Huijue 10 Gigabit Fiber Optic Switch Port Down



Huijue 10 Gigabit Fiber Optic Switch Port Down



This document describes how to determine why a port or interface experiences problems.



This article describes how to solve the transceiver type mismatch on a Huawei switch (e.g. from 25Gbps to 10Gbps)



I have a backdoor trunk from a switch that has a current 1gig uplink to that building over Ethernet to adjust configs. My test is to turn that uplink port off on the 1gig switch while running a ping with no ...



This document describes how to check the switch interface or port status and how to locate an interface physically down fault and restore the interface to the up state.



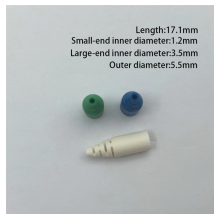
I have plugged one Huawei (CE 5855-48) SFP 10G on the switch (Dell s5224F-ON), the problem is : the dell switch always showing that the Pluggable media present, SFP28 type is SFP28 ...



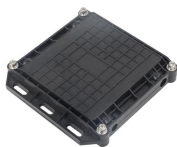
You can quickly resolve SFP+ Module connectivity issues by following a systematic optical transceivers troubleshooting process. Check for common connection problems, such as link ...



I understand that Port 1/1/1 on the ICX7850-48FS is down and showing “configured speed 10G, actual unknown”, which is likely due to an incompatible Huawei 10G SFP+, as no light or ...



Check port statistics for any Tx and Rx errors on all interfaces of the switches, including LAGs. Those switches are covered with limited lifetime Netgear warranty, normally you'd start a chat ...



This guide provides a detailed understanding of what port flapping is, its causes, its impact on network operations, and effective methods to troubleshoot and prevent it.



Product Highlights 10 Gigabit SFP+: 8 x 10Gbps SFP+ ports, enable high-bandwidth connected, auto-adaptive 1G/2.5G/10G optical fiber module, wider rate range. Web Managed: Powerful management ...

Contact Us

For more information, pricing, or custom network solutions, please contact us:

Website: <https://www.hashherbcafe.co.za>

Email: hello@hashherbcafe.co.za

Phone: +27 63 814 7295

Address: 15 Galaxy Road, Linbro Business Park, Johannesburg, 2065, South Africa

This document is for informational purposes only. Specifications subject to change without notice.

