

# Huawei switch not working when fiber optic cable is plugged in



## Overview

This document describes how to check the switch interface or port status and how to locate an interface physically down fault and restore the interface to the up state. Hardware failures: include hardware. Problem: All optical ports cannot be connected, and the indicator lights are not on. During use, reading optical module information helps understand its real-time operating status, enabling faster troubleshooting of link abnormalities. Check whether the peer device works in auto-negotiation mode. The causes are as follows: 802. FCS and CRC errors occur on the port. The self-loop of a single fiber cannot go Up.

## Huawei switch not working when fiber optic cable is plugged in



Turn the support to find the correct optical fiber installation slot and push the support forward (together with the rubber ring) until the optical fiber is installed to the correct position.



Check whether the working modes of two optical modules are correct, including the receive power, transmit power, and current.



I'm currently in the process of making an ethernet cable that doesn't have the power carrying pair connected, so that we can test if the POE injector is somehow pushing power to the ...



Check whether the optical fiber matches the optical module. If not, replace the optical fiber with a matching one. Check whether the port is a combo port. If so, set the combo port to work ...



This article summarizes several solutions for using optical modules with switches and common problems encountered during usage, along with specific solutions.



Check whether the optical module is Huawei-certified. If it is not certified by Huawei, replace it with a Huawei certified one. Remove and reinstall the optical module. If this resolves the ...



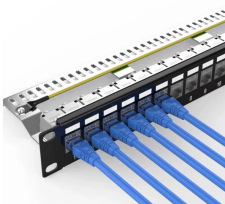
When connecting two devices, check whether optical modules match optical interfaces, whether optical modules match fiber models, and whether optical modules and fibers are connected correctly.



The following uses the Modulatek SFP-10G-LR module connected to a Huawei S6700 switch as an example to introduce how to read information of the connected optical module on a Huawei switch.



If the transmission medium does not match the interface, replace the optical module, optical fiber/cable, or copper cable to ensure that the transmission medium is correctly used.



Use an optical power meter to check whether the receive power settings of the connected devices are within the receiver sensitivity range. Check whether the connectors of a patch cord are clean. If ...

## Contact Us

For more information, pricing, or custom network solutions, please contact us:

Website: <https://www.hashherbcafe.co.za>

Email: [hello@hashherbcafe.co.za](mailto:hello@hashherbcafe.co.za)

Phone: +27 63 814 7295

Address: 15 Galaxy Road, Linbro Business Park, Johannesburg, 2065, South Africa

This document is for informational purposes only. Specifications subject to change without notice.

