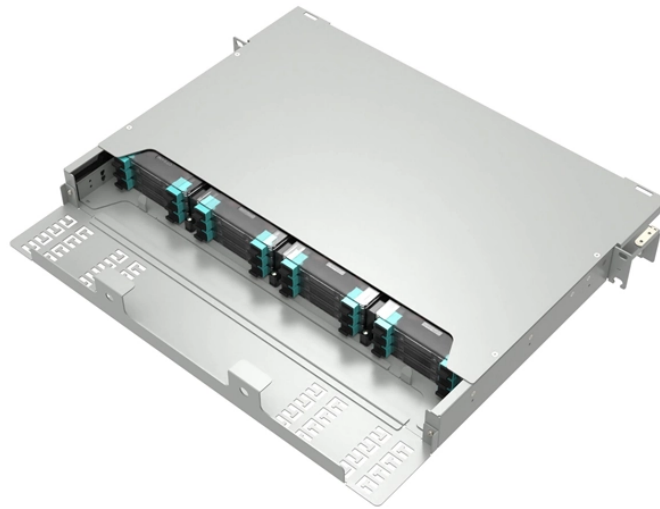


Huawei optical module genuine verification



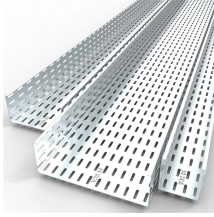
Overview

Use the barcode scanning software to scan the two-dimensional code on the optical module label, obtain the barcode, and contact Huawei engineers to check. The barcode scanner is recommended as the barcode scanning software. If the optical modules you use are delivered after July 1, 2013, use either of the following methods to determine whether they have been certified by Huawei. Obtain the optical module serial number and contact Huawei engineers to. 02315233 - Genuine Huawei SFP-FE-SX-MM1310 Optical Transceiver, SFP, 100M/155M, Multi-mode Module (1310nm, 2km, LC)Basic InformationModule name: SFP-FE-SX-MM1310Part Number: 02315233Model: SFP-FE-SX-MM1310Form factor: SFPApplication standard: 100BASE. Run the display transceiver [interface interface-type interface-number | slot slot-id], to view the information on. Wondering if the HUAWEI product you just purchased is genuine?

The purpose of this document is to provide you with the instruction on how to check the authenticity of Huawei products via Official Huawei Consumer Website, My HUAWEI application and online customer service. SN: or serial

number, is a.

Huawei optical module genuine verification



Buy Genuine Huawei Optical Modules and Cables from GenuineModules with best price and fast worldwide shipping.



Wondering if the HUAWEI product you just purchased is genuine? The purpose of this document is to provide you with the instruction on how to check the authenticity of Huawei products via Official ...



Huawei switches must use Huawei-certified optical modules. Non-Huawei-certified optical modules cannot ensure transmission reliability and may affect service stability.



If the optical modules you use are delivered after July 1, 2013, use either of the following methods to determine whether they have been certified by Huawei.



See the interface module via the optical display command information, including general information of the optical module, manufacturing information, and alarm information.



To determine whether optical modules delivered for Huawei S switches before July 1, 2013 are certified ones, contact Huawei technical support. If your optical modules are delivered after July 1, 2013, use ...



Method 1: Check for "HUAWEI" on the Label. "Identify Huawei-Certified Optical Modules" is published by Melissa Dan.



You can check whether an optical module is officially delivered by Huawei using one of the following methods: Use the barcode scanning software to scan the two-dimensional code on the ...



To confirm whether optical modules you use have been certified by Huawei, contact technical support personnel. If the optical modules you use are delivered after July 1, 2013, use either of the following ...

Contact Us

For more information, pricing, or custom network solutions, please contact us:

Website: <https://www.hashherbcafe.co.za>

Email: hello@hashherbcafe.co.za

Phone: +27 63 814 7295

Address: 15 Galaxy Road, Linbro Business Park, Johannesburg, 2065, South Africa

This document is for informational purposes only. Specifications subject to change without notice.

