

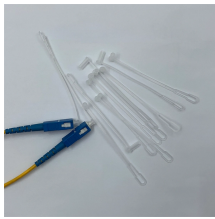
# Huawei Industrial-Grade Ethernet Core Switch



## Huawei Industrial-Grade Ethernet Core Switch



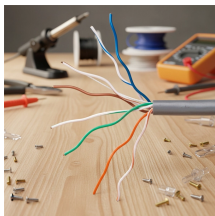
The Huawei Ethernet Industrial Switch S3700 isn't here to dazzle you with buzzwords—it's built to survive. In factories where dust coats every surface, oil rigs battered by ...



Realize wired and wireless convergence from access to core, manage up to 10,240 APs with a single switch, and achieve simplified O& M with unified user authentication.



Industrial Ethernet isn't a luxury; it's the hardened nervous system keeping critical operations alive. That's the brutal reality the Huawei Industrial Ethernet Switch is built for. It promises ...



Thunder link offers various models of Huawei Ethernet switches and network switches, including the S5720, S6720, S6730, CE6800 and CE12800, designed for data centers and campus networks. ...



Huawei CloudEngine S5735I-S-V2 series industrial switches (DIN rail-mounted) are next-generation industrial switches that provide flexible all-gigabit access and GE/10GE uplinks. They stand out with ...



For data centers and high-end campus networks, the Huawei's CE Ethernet switches power the world's biggest carrier networks and data centers. Help you build and maintain resilient, secure, and ...



With multiple industry-leading intellectual properties and patents, Huawei provides more than a hundred switch models in more than 10 series, including access, aggregation, and core switching.



The CloudEngine S5731I-L series supports an industrial-grade operating temperature range and can work in the cabinet in harsh outdoor environment. This makes them ideal for scenarios, such as ...



Huawei campus switches are ideal for building future-proof campus networks with simplified management, high reliability, and service intelligence, across industries such as enterprises, ...



Huawei CloudEngine 12800 series switches are next-generation, high-performance core switches designed for data centers and high-end campus networks. They provide stable, reliable, secure, and ...

## Contact Us

For more information, pricing, or custom network solutions, please contact us:

Website: <https://www.hashherbcafe.co.za>

Email: [hello@hashherbcafe.co.za](mailto:hello@hashherbcafe.co.za)

Phone: +27 63 814 7295

Address: 15 Galaxy Road, Linbro Business Park, Johannesburg, 2065, South Africa

This document is for informational purposes only. Specifications subject to change without notice.

