

How to wire the CD in the distribution box



Overview

This video shows real on-site footage of electrical installation, demonstrating safe and standardized wiring methods used by professionals. Covers wiring, placement, standards, and expert tips for a compliant setup. Connecting a distribution box involves several steps to ensure proper electrical flow. floor in a multi storey building. And all the switching and protective devices are installed in the distribution box. Distributed audio (sometimes referred to as whole-house or multi-room audio) should not be confused with home theater, which is generally confined to reproducing audio.

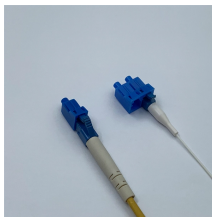
How to wire the CD in the distribution box



Learn how to wire a distribution box step by step! This video shows real on-site footage of electrical installation, demonstrating safe and standardized wiring methods used by...



In this video, we'll walk you through the process of wiring a home distribution box with a detailed connection diagram. Whether you're an electrician or a DIY enthusiast, this guide will help you ...



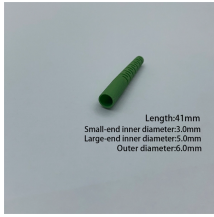
To route the DC cable into the Distribution Box, follow the same procedure as the AC cable except all wire routing features are now on the right side of the box (looking from the front).



Wiring Direction: Wiring between the main circuit breaker and each branch circuit breaker in the box generally goes on the left, and the wiring out of the distribution box generally goes on the ...



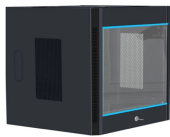
Hey, in this article we are going to see the Single Phase Distribution Box Wiring Diagram and Connection Procedure. A distribution board or distribution box is where the main power supply is ...



Learn how to install a distribution box safely and correctly. Covers wiring, placement, standards, and expert tips for a compliant setup.



Learn how to connect a distribution box with this easy-to-follow, step-by-step guide. From tools and materials needed to common installation mistakes and solutions, this comprehensive article will ...



Introduction
 Understanding The Components of A Distribution Box
 Selecting The Right Distribution Box
 Site Preparation and Location Requirements
 Electrical Connections and Wiring
 Compliance with Standards and Regulations
 Conclusion
 A distribution box is a crucial part of any electrical system. It's divided into two main sections that work together to keep everything running smoothly and safely. See more on eabel
 Published: Feb 7, 2025
 nuomak-mccb



Using an 8 AWG minimum size copper wire, attach from the RV chassis to the chassis bar inside the Distribution Panel. Connect the 120 VAC power source to the AC circuit breakers that are mounted ...



Figure 1 shows an example of this layout in a typical home. The three runs are: From the amplifier location to the distribution device. From a suitable wallplate located at the amplifier's and source ...



Use our tools to quickly create a custom wiring diagrams for your Entertainment System, including TV, DVD, Blu-Ray, Satellite/Cable, Computer and other components

Contact Us

For more information, pricing, or custom network solutions, please contact us:

Website: <https://www.hashherbcafe.co.za>

Email: hello@hashherbcafe.co.za

Phone: +27 63 814 7295

Address: 15 Galaxy Road, Linbro Business Park, Johannesburg, 2065, South Africa

This document is for informational purposes only. Specifications subject to change without notice.

