

How to use the 1U cable management rack in the server rack



Overview

The most common “clean rack” pattern is simple: a patch panel paired with a 1U cable manager right above or below it, so patch cords naturally drop into a channel instead of floating across the face of the rack. If cords route upward to switches, mount the manager above the patch. That's why 1U cable management is one of the highest ROI pieces you can spec in a data center rack. It quietly protects bend radius, reduces port strain, keeps labels readable, and makes bandwidth upgrades and troubleshooting less painful. It comes with various mounting hardware for different rack types, including square hole racks, threaded racks, and round hole racks. The arm can be attached to the rack using either short or long rack. Server racks, from a strict technical point of view, are designed to house computers that are dedicated to serving out data and the associated uninterruptible power supplies (UPS) to keep them running in the event of power failure. Square Hole Racks: Install Cage Nuts in appropriate positions.

How to use the 1U cable management rack in the server rack



The Long Rack Bracket is needed when the back of the server is near the rear mounting posts. If the Long Rack Bracket is needed, remove the Short Rack Bracket and attach the Long Rack Bracket ...



Tired of messy networks? It's time to upgrade with 1U cable management, perfect for organizing your rack and cabinet. Placing a 1U cable manager between your switch and patch panel ...



Discover rack unit sizing, cable management, labeling, bonding, and grounding for optimal performance and reliability.



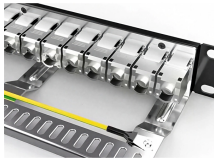
In this video I will unbox and install my cable management brackets for the server rack.



Installation guide for 1UCMA-137, 2UCMA-137 Cable Management Arm. Learn how to install and use the arm with multiple server rack types, includes hardware and mounting methods.



This guide offers a comprehensive look at server rack cable management, covering its definition, key components, common challenges, best practices, and solutions for a clean and ...



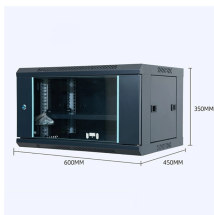
Learn how to organize network cables in a server rack with this 6-step guide. Improve airflow, reduce downtime, and simplify data center maintenance.



Practical 1U metal cable management guide for server racks—keep patch cords tidy, protect bend radius, and maintain airflow. 24/48-port options inside.



This guide will explore the importance of cable management, key workloads, best practices, strengths, drawbacks, and frequently asked questions to help you optimize your server rack setup.



Implement cable management in the server rack correctly: step-by-step instructions, legal requirements & more.

Contact Us

For more information, pricing, or custom network solutions, please contact us:

Website: <https://www.hashherbcafe.co.za>

Email: hello@hashherbcafe.co.za

Phone: +27 63 814 7295

Address: 15 Galaxy Road, Linbro Business Park, Johannesburg, 2065, South Africa

This document is for informational purposes only. Specifications subject to change without notice.

