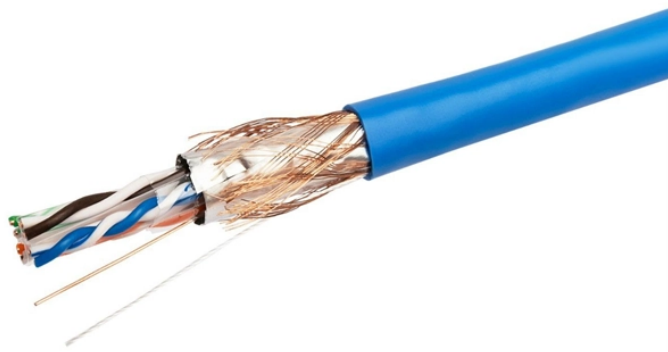


## How to use ground cable trays



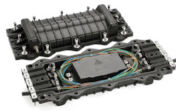
## How to use ground cable trays



Introduction The purpose of this document is to describe the correct process to install the connectors in our cable trays.



A professional guide to installing electrical cable tray systems per NEC Article 392. Covers support, securing cables, and fill calculations.



The document discusses grounding and bonding practices for metallic and non-metallic cable trays. Metallic cable trays must be grounded and can serve as an equipment grounding conductor if the ...



Discover the best practices for Cable Tray Grounding Wire installation. Learn key requirements, safety tips, and material choices to ensure a grounding system.



Proper planning for installing cable tray includes calculations based on loading, support systems, cable/wire fill and spacing, conductor types, securing of the cables and wire, and proper grounding ...



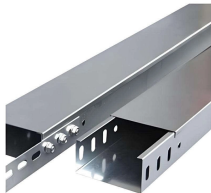
These trays are ideal for use in commercial offices, industrial facilities, data centers, and smart building infrastructure, where reliability, accessibility, and efficient cable management are ...



This comprehensive guide delves into the complexities of cable tray grounding, offering in-depth insights into its importance, principles, design considerations, installation best practices, and ...



A bare copper equipment grounding conductor should not be placed in an aluminum cable tray due to the potential for electrolytic corrosion of the aluminum cable tray in a moist environment. For such ...



Learn how to properly size bonding jumpers for cable trays and conduit. Understand EGC considerations, voltage levels, and oil tank grounding.



In addition to providing an electrical connection between the cable tray sections and the EGC, the grounding clamp mechanically anchors the EGC to the cable tray so that under fault ...



The intent of this article is to review grounding practices for cable tray wiring systems. The Equipment Grounding Conductors are the most important conductors in the electrical systems. The Equipment ...

## Contact Us

For more information, pricing, or custom network solutions, please contact us:

Website: <https://www.hashherbcafe.co.za>

Email: [hello@hashherbcafe.co.za](mailto:hello@hashherbcafe.co.za)

Phone: +27 63 814 7295

Address: 15 Galaxy Road, Linbro Business Park, Johannesburg, 2065, South Africa

This document is for informational purposes only. Specifications subject to change without notice.

