

## How to use a single-mode fiber optic converter



### Overview

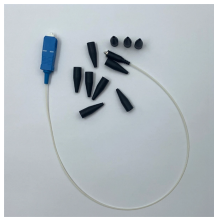
Converting multimode fiber to single-mode fiber can improve network performance and future-proof infrastructure. [Why Can't You Directly Connect SMF and MMF?](#)

At its heart, the incompatibility is physical. The core size of multi-mode fiber is. Fiber media converters quietly solve a big, practical problem: they bridge copper Ethernet to fiber and extend links far beyond copper's reach. In real networks such as campuses, factories, metro POPs converters let you reuse existing switches and still run fiber for long distance, EMI immunity. While multimode fiber (MMF) is commonly used for short-distance applications, single-mode fiber (SMF) is preferred for long-distance communication due to its higher bandwidth and lower attenuation. A lightwave with a certain frequency, polarization.

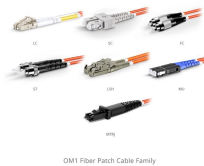
## How to use a single-mode fiber optic converter



To connect these two buildings over a single-mode fiber link, each Ethernet switch equipped with multimode fiber ports must be connected to each fiber-to-fiber media converter, which converts the ...



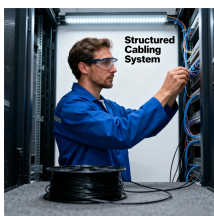
Use can be both a verb and a noun, while usage can only function as a noun. Use has a wide range of definitions, as either a verb or a noun.



TL-MC101 is a media converter designed to convert 1000BASE-LX fiber to 1000Base-T copper media or vice versa. Designed under IEEE802.3ab 1000Base-T and IEEE802.3z 1000Base-LX standards, TL ...



Understand single-fiber (BiDi) vs dual-fiber, A/B wavelength pairing (1310/1550), copper-to-fiber use cases, LED meanings, and cross-brand interoperability.



to come (also fall, go, etc.) into use: to be introduced into customary or habitual employment or practice; to begin to be used; esp. (of vocabulary, syntax, etc.) to be introduced into common usage.



The meaning of USE is to put into action or service : avail oneself of : employ —often used with for; often followed by to + a verb. How to use use in a sentence.



Discover the complete guide on converting multimode to single-mode fiber in communication networks. Understand the differences and learn the necessary steps.



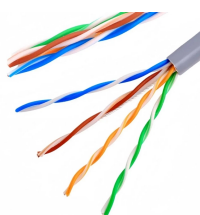
Learn how single-mode and multi-mode transceivers differ, compatibility rules, testing tips, and best practices for reliable fiber deployments.



If you have a use for something, you need it or can find something to do with it.



She quickly used up (all of) her inheritance. Don't shower too long and use up (all) the hot water.



Therefore, the link between buildings from the LAN to the wide-area network (WAN) needs to use single-mode fiber to extend the transmission distance. This article introduces the fiber ...



Converting multimode fiber to single-mode fiber can improve network performance and future-proof infrastructure. This guide will walk you through the methods, challenges, and best ...



USE definition: 1. to put something such as a tool, skill, or building to a particular purpose: 2. to reduce the.... Learn more.



Convert fiber between multimode and single mode using smart methods for better speed, longer distance, and reliable network performance.



A technical guide explaining the various types of fiber optic converters available today, including their signal type, mounting options, and powering.



Understand single-fiber (BiDi) vs dual-fiber, A/B wavelength pairing (1310/1550), copper-to-fiber use cases, LED meanings, and cross-brand ...



As a noun use means "purpose." As a verb, use means either "put to work," or "work something until there isn't anything left," unless you use your left, meaning you exploit her.



Explore the definition of the word "use," as well as its versatile usage, synonyms, examples, etymology, and more.



In this application, two Ethernet switches equipped with multimode fiber ports are connected utilizing a pair of fiber-to-fiber converters which convert the multimode fiber to single-mode and enable network ...

## Contact Us

For more information, pricing, or custom network solutions, please contact us:

Website: <https://www.hashherbcafe.co.za>

Email: [hello@hashherbcafe.co.za](mailto:hello@hashherbcafe.co.za)

Phone: +27 63 814 7295

Address: 15 Galaxy Road, Linbro Business Park, Johannesburg, 2065, South Africa

This document is for informational purposes only. Specifications subject to change without notice.

