

How to use a network patch panel clamp



Overview

Here's a quick guide on how to install one: □ Step 1: Mount the Patch Panel Secure the patch panel into your network rack or wall mount bracket. □ Step 2: Run Your Ethernet Cables Pull your Cat5e/Cat6 cables from each wall outlet or device location to the back of the patch. Connecting a patch panel involves organizing and terminating network cables for easier management and connectivity; the process focuses on punching down cables from wall jacks to the panel and then using patch cables to connect devices to your network. Stripped outer jacket of the Cat6 cable. This article will. Page 1 15216-MD-40-EVEN Mux/Demux Patch Panels Introduction This document explains how to install and operate the Cisco ONS 15216 100 GHz 40-channel mux/demux patch panel. The Cisco ONS 15216 40-channel mux/demux patch panel is a new ONS 15216 FlexLayer unit that allows 40-channels of ITU. The patch panel is your best friend! It helps you manage and connect Ethernet cables efficiently—whether for an office, data center, or home setup.

How to use a network patch panel clamp



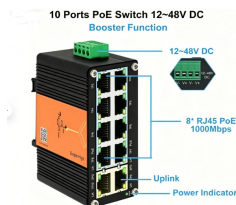
Page 1 15216-MD-40-EVEN Mux/Demux Patch Panels Introduction This document explains how to install and operate the Cisco ONS 15216 100 GHz 40-channel mux/demux patch panel.



This article will explain how to connect a patch panel to ensure your network's best performance. The use of patch panels is becoming increasingly ...



HOW TO INSTALL A PATCH PANEL FOR NETWORK CABLING ☐☐ Are you setting up a structured network and wondering how to neatly organize your cables? The patch panel is your best friend!



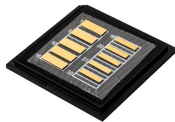
Guide to wiring Ethernet patch panels for networks. Tips on setup, wiring order, and best practices.



Learn the step-by-step network patch panel and keystone jack wiring methods, including essential tools, T568A/B wiring sequences, and tool-free installation tips.



This article will explain how to connect a patch panel to ensure your network's best performance. The use of patch panels is becoming increasingly popular in data centers and office ...



This document explains how to install and operate the Cisco ONS 15216 100 GHz 40-channel mux/demux patch panel. The Cisco ONS 15216 40-channel mux/demux patch panel is a new ONS ...



Patch panels are usually designed to be fitted into standard 19-inch racks, with particular mounting hardware on the left and right-hand sides allowing for easy installation of one or multiple ...



By following this comprehensive guide, you will gain the knowledge and confidence to set up a network switch and patch panel effectively, laying the foundation for a robust and reliable ...



Connecting a patch panel involves organizing and terminating network cables for easier management and connectivity; the process focuses on punching down cables from wall jacks to the ...



A step-by-step guide to structured cabling patch panel setup. Learn best practices to organize network cables in your data center for peak performance.

Contact Us

For more information, pricing, or custom network solutions, please contact us:

Website: <https://www.hashherbcafe.co.za>

Email: hello@hashherbcafe.co.za

Phone: +27 63 814 7295

Address: 15 Galaxy Road, Linbro Business Park, Johannesburg, 2065, South Africa

This document is for informational purposes only. Specifications subject to change without notice.

