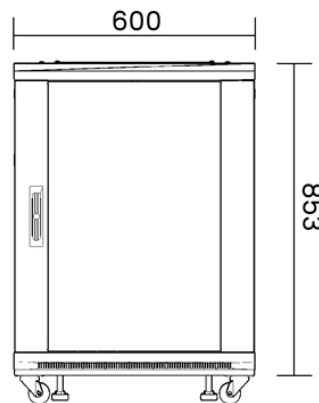


# How to use Huawei single-mode fiber optic modules



## Overview

Huawei Small Form Factor pluggable module used for Single Mode or Multi Mode transmission. It converts light signals passes through fiber Optic cable to electric or electrical signals and vice versa. moreA switch must use optical or copper modules that have been certified for use on Huawei switches. Huawei is not liable for any problem caused by the use of non-certified optical or copper. SFP (Small Form-factor Pluggable) transceivers are essential components in modern fiber optic networks, enabling network devices such as switches, routers, and servers to transmit and receive data over optical fiber. During use, reading optical module information helps understand its real-time operating status, enabling faster troubleshooting of link abnormalities. Solution: To solve this problem, you can follow these steps: Check if the fiber and optical modules are compatible. Perform a. From the core connections of enterprise LANs to the 400G/800G fabrics of hyperscale data centers, SFP modules are ubiquitous.

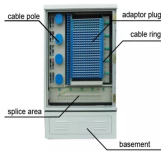
## How to use Huawei single-mode fiber optic modules



If an optical module is installed in a running device, you can run the display transceiver command to view parameters of the optical module, including the center wavelength, transmission distance, fiber ...



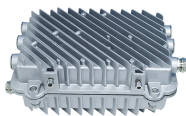
Huawei Small Form Factor pluggable module used for Single Mode or Multi Mode transmission. It converts light signals passes through fiber Optic cable to electric or electrical signals...



In this guide, you will learn what a single mode SFP transceiver is, how it works, the key specifications and types available, and where it is commonly used.



If an optical module is installed in a running switch, you can run the display transceiver command to view parameters of the optical module, including the center wavelength, transmission distance, fiber types ...



Learn how to identify single-mode and multimode SFP modules with our comprehensive guide. Explore SFP features, testing methods, and compatibility.



The following uses the Moduletek SFP-10G-LR module connected to a Huawei S6700 switch as an example to introduce how to read information of the connected optical module on a Huawei switch.



Check whether the optical module is Huawei-certified. If it is not certified by Huawei, replace it with a Huawei certified one. Remove and reinstall the optical module. If this resolves the ...



This is the legal and technical foundation that allows you to plug a third-party module into a Cisco, Juniper, or Huawei switch and have it fit physically perfectly.



This article summarizes several solutions for using optical modules with switches and common problems encountered during usage, along with specific solutions.



The Huawei Optical Transceiver SFP-10G-LR is a versatile and high-performance 10G SFP+ module. Designed for single-mode fiber, it offers reliable 10km transmission at 1310nm.

## Contact Us

For more information, pricing, or custom network solutions, please contact us:

Website: <https://www.hashherbcafe.co.za>

Email: [hello@hashherbcafe.co.za](mailto:hello@hashherbcafe.co.za)

Phone: +27 63 814 7295

Address: 15 Galaxy Road, Linbro Business Park, Johannesburg, 2065, South Africa

This document is for informational purposes only. Specifications subject to change without notice.

