

## How to turn off the power switch of the secondary distribution box



### Overview

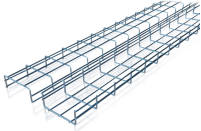
Turning off the power at a breaker panel is usually straightforward. After identifying the breaker controlling the circuit, push the breaker's handle to the off position (photo A). The breaker handle should click into position; if it doesn't, flip it again until you hear a click. [more How Do I Safely Turn Off Power At The Electrical Box?](#)

Are you planning to do some home repairs and want to make sure you're working safely around electrical systems?

In. Always shut off the power to an outlet before working on it—and then test with an electrical tester to be sure there's no voltage present. In rare instances, a circuit may be mistakenly fed by more than one breaker! Because individual devices such as receptacles, switches, and fixtures can give. Turning off a power sub panel may seem intimidating at first, but by following some basic safety guidelines and understanding a few key concepts, anyone can switch off the power with relative ease. This is usually located near the main circuit. So I'm wondering what to do to cut the power. Whether you've

never looked at your electrical panel or you're baffled by the equipment inside, you're not alone.

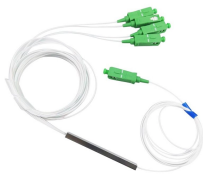
## How to turn off the power switch of the secondary distribution box



I'd like to get that neutral back to the neutral bar where it belongs, but I obviously don't want to do anything before killing power to the whole panel. The problem is there doesn't seem to be ...



To turn off a specific circuit, find the right breaker and switch it to the "off" position. Make sure to test the device to verify the power is off before starting any work. To cut power to the entire ...



In this article, we'll explore how to safely and easily turn off a power sub panel. Turning off a power sub panel may seem intimidating at first, but by following some basic safety guidelines and ...



By following these steps and safety tips, you can confidently and safely turn off home electricity. If in doubt or if the situation is beyond your control, seek professional assistance.



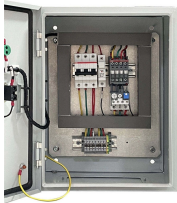
**ALWAYS** turn off the main breaker before performing inspections or maintenance on any electrical items in your home. Never tape a tripped breaker into the ON position.



If your panel doesn't have a main switch, simply turn off all individual circuit breakers to cut power to the home. If you need to turn off power only to a single circuit, use a voltage tester on the outlets ...



In this informative video, we'll guide you through the proper steps to turn off power at your electrical box.



To shut off electricity to the entire house, locate the main circuit breaker (s) or "main breaker handle" at the top of your main electrical panel and flip them to the OFF position.



Because individual devices such as receptacles, switches, and fixtures can give false readings if they are defective or incorrectly wired, the only safe way to shut off the electricity is by flipping a breaker in ...



Learn how to turn off the power to branch circuits or to the entire home at the main circuit breaker panel or fuse box.

## Contact Us

For more information, pricing, or custom network solutions, please contact us:

Website: <https://www.hashherbcafe.co.za>

Email: [hello@hashherbcafe.co.za](mailto:hello@hashherbcafe.co.za)

Phone: +27 63 814 7295

Address: 15 Galaxy Road, Linbro Business Park, Johannesburg, 2065, South Africa

This document is for informational purposes only. Specifications subject to change without notice.

