

How to troubleshoot a broken fiber optic cable



How to troubleshoot a broken fiber optic cable



Learn how to repair fiber optic cable with our step-by-step guide. Discover essential tools, splicing techniques, and troubleshooting tips.



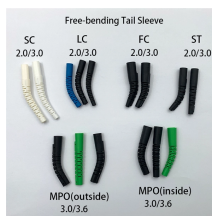
Whether you're a homeowner troubleshooting home internet issues or a technician managing a larger network, knowing how to diagnose and resolve problems in fiber optic cables is crucial.



Understanding how to effectively pinpoint and rectify these problems is crucial for maintaining network integrity and performance. This comprehensive guide will equip you with the ...



Learn how to repair a damaged or cut fiber optic cable with step-by-step instructions, essential tools, and best practices. Restore your fiber cable quickly and ensure stable, low-loss network performance.



Identifying and repairing these breaks swiftly and effectively is critical to maintaining network reliability. This guide provides a detailed roadmap for locating and fixing fiber optic cable ...



When fiber cables sustain damage, specialized repair techniques help restore connectivity and maintain data integrity. This comprehensive guide outlines professional fiber optic ...



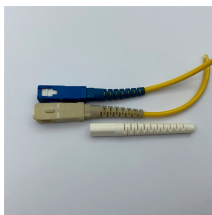
When it comes to troubleshooting, optical fault finders fill the gap between a VFL and an OTDR. Optical fault finders such as Fluke Networks' Fiber QuickMap quickly and efficiently measure length and ...



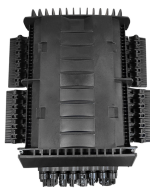
Troubleshoot fiber optic issues like a pro with our expert guide. Resolve common problems and ensure seamless connectivity.



This guide lists the actual, field-proven problems technicians encounter most often and gives step-by-step troubleshooting actions you can copy into your ...



While a cut or damaged fiber optic cable can temporarily take your network down, it is possible to quickly fix the cable with the right tools. This wikiHow article will teach you how to splice a ...



This guide lists the actual, field-proven problems technicians encounter most often and gives step-by-step troubleshooting actions you can copy into your maintenance routine.

Contact Us

For more information, pricing, or custom network solutions, please contact us:

Website: <https://www.hashherbcafe.co.za>

Email: hello@hashherbcafe.co.za

Phone: +27 63 814 7295

Address: 15 Galaxy Road, Linbro Business Park, Johannesburg, 2065, South Africa

This document is for informational purposes only. Specifications subject to change without notice.

