

## How to mount ribbon optical cable onto a reel



## How to mount ribbon optical cable onto a reel



✂ Level Up Your Fiber Skills - Join the One Up Techs Skool <https://> In this video, I am Splicing and traying 432F cable too a 144F and ...



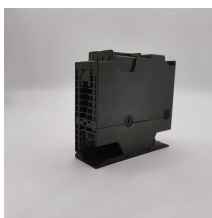
Do not allow cable to payoff of the side of the reel, this will cause twists. Do not push and pull cable by hand, with puller, or with a jetting machine at the same time during placing. Pay ...



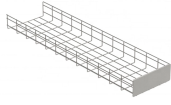
Insert the crank handle into the side of the reel and wind the cable onto the reel. Note: If equipped with the spring rewind or cable guide options, see special instructions below.



1. Insure that machinery to be serviced by reel is at position closest to reel. 2. Securely mount reel in desired position using 1/2" (M12) bolts. Be sure spool is aligned with cable run.



Insure that machinery to be serviced by reel is at position closest to reel. Securely mount reel in desired position using 3/8"(M10) bolts. Be sure spool is aligned with cable run. Position optional cable guide, ...



Where it is necessary to lift reels and the cable reel is too heavy to move manually, the reel must be moved upright by lifting the cable with a fork lift or reel mover.



Unlike traditional metal-style reels, MARS is a lightweight, modular system constructed of an impact modified polymer that is easily transported. It is ideal for applications where cable needs to be ...



The stationary reel method is best used when there are obstacles between the cable reel and the steel messenger or there is no clear path along side the pole line to allow a reel trailer and truck to drive ...



In this instructional video, Test Equipment Product Manager, Bob Licari demonstrates how to do a ribbon splice on a Sumitomo Q102M12 OTDR with a 12-fiber optic ribbon. ...more



When adding additional furcated cable subunits to the tray, the small cable tie will have to share the opening with the previous cable subunit's cable tie to fit all the cable subunits onto the same side of ...



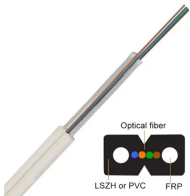
All optical fiber cables must be tested while on the reel, prior to deployment. Installing cable is a time-consuming and expensive process so it is important to ensure the cable is good before installation.



Refer to the cable specification sheet for the specific allowed tension for each cable. Coils are required for all ribbon gel-free and gel-filled armor cables that are in a butt-type closure any other closure, or ...



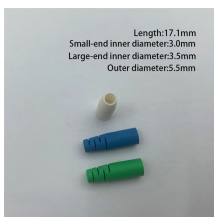
Use electrical tape to cover the exposed section of cable, starting from beyond the insulation and covering the end leaving a short "pigtail" of tape at the end of the cable. Slide the taped cable end ...



Overview ronment fiber optic installations. Unlike traditional metal-style reels, MARS is a lightweight, modular system constructed of a high-impact glass-enforced polymer that is easily transported and is ...



Attach the pulling line to the fiber optic cable and position the reel in the same manner as for an end pull. The pull manhole setup and the feed manhole setup are the same as they were for an end pull.



Ribbon cables, or multi-wire planar cables, are flat cables with multiple cords fixed together. They're generally considered obsolete these days, but you may occasionally find them ...



Using this method, the fiber optic cable is pulled into place beneath the strand using cable blocks. Lashing the cable to the strand then begins at the far end of the cable route with the lasher being ...

## Contact Us

For more information, pricing, or custom network solutions, please contact us:

Website: <https://www.hashherbcafe.co.za>

Email: [hello@hashherbcafe.co.za](mailto:hello@hashherbcafe.co.za)

Phone: +27 63 814 7295

Address: 15 Galaxy Road, Linbro Business Park, Johannesburg, 2065, South Africa

This document is for informational purposes only. Specifications subject to change without notice.

