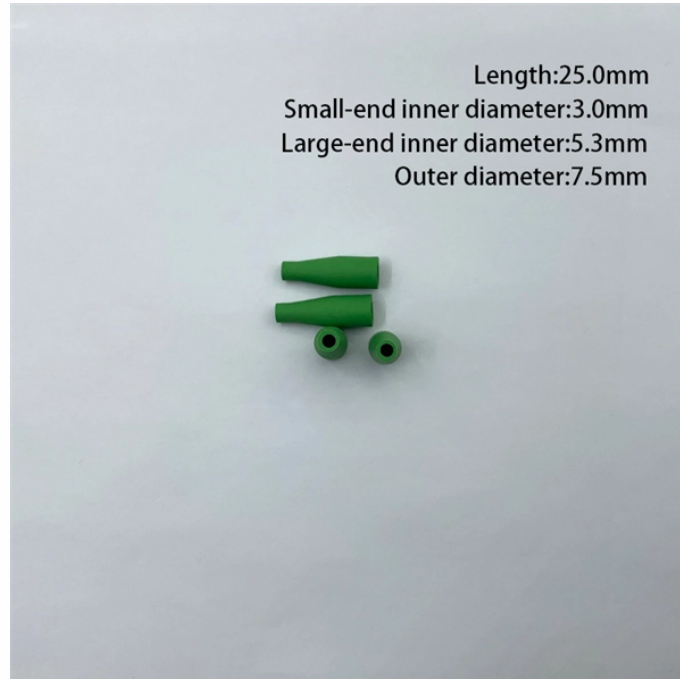


How to modify the exterior wall of a secondary distribution box



Overview

Learn how to mount a weatherproof electrical box on an exterior wall, cut the opening, run wiring, and seal gaps to avoid moisture problems. This setup allows for the localized extension of electrical service to remote areas or high-demand outdoor equipment. The sub panel. What we usually do, is install an LB (like in the photo) with a chase nipple and bushing at the flush mount panel. Cut an Opening: Using a drywall saw, cut an opening in the wall that matches the size of the electrical box. This modal can be closed by pressing the Escape key or activating. Customizing a distribution box is crucial for meeting project specifications, improving safety and functionality, and protecting against environmental conditions. Unlike standard junction boxes, these distribution systems must.

How to modify the exterior wall of a secondary distribution box



Video transcript: I'm installing a subpanel for a garage shop. The first thing I do is mark out where it's going to be mounted in the wall. I generally use my own eye level with the main breaker as a good ...



When adding additional equipment, I have never been able to find a code compliant way to transition from the flush panel to an exterior LB, gutter, or NEMA 3R box.



METHOD STATEMENT FOR Electric panel and distribution box installation and termination - Free download as PDF File (.pdf), Text File (.txt) or read online for free. This document provides a method ...



This specification guide provides system designers, electrical engineers, and procurement professionals with the technical criteria needed to select compliant outdoor electrical ...



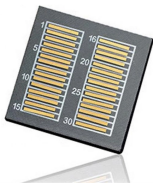
Proper lighting and illumination should be provided to the working space of service equipment and panelboards. Firm Installation: Panelboards must be firmly secured to mounted surface and as close ...



Installing an electrical sub panel yourself can save you hundreds or even thousands of dollars. Learn about the requirements for each step in the process and, as always when working with...



Install your exterior sub panel the right way. Master sizing, wiring, and code-compliant neutral/ground separation.



Installing an outdoor electrical panel box requires careful planning and execution. This guide covers everything you need to know for a safe installation. Understanding local electrical codes is ...



When adding additional equipment, I have never been able to find a code compliant way to transition from the flush panel to an exterior LB, gutter, or ...



Up to 24% cash back · Learn how to mount a weatherproof electrical box on an exterior wall, cut the opening, run wiring, and seal gaps to avoid moisture problems.



Customizing a distribution box is crucial for meeting project specifications, improving safety and functionality, and protecting against environmental conditions. Learn the factors to ...

Contact Us

For more information, pricing, or custom network solutions, please contact us:

Website: <https://www.hashherbcafe.co.za>

Email: hello@hashherbcafe.co.za

Phone: +27 63 814 7295

Address: 15 Galaxy Road, Linbro Business Park, Johannesburg, 2065, South Africa

This document is for informational purposes only. Specifications subject to change without notice.

