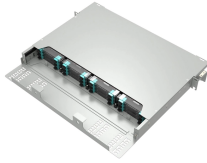


How to install vertical brackets for network cabinets



How to install vertical brackets for network cabinets



Our new video includes a comprehensive overview of our VWM Series cabinets, as well as a guide on how to properly install the VWM Series to support your application.



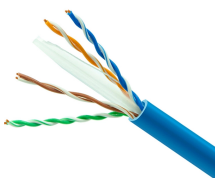
Up to three vertical PDUs or cable management accessories can be mounted to ...



ADDED MOUNTING FEATURES: The IT server room cabinet features a 2U mounting bracket positioned toward the top of the enclosure, that you can use to mount patch cables or other rack ...



Up to three vertical PDUs or cable management accessories can be mounted to the SRPDU4PHDBRKT brackets. Keyhole slots support toolless button mounting. The brackets also have equipment ...



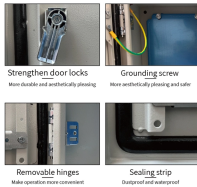
Vertical Wall Mount Brackets are available in 2RU, 3RU and 4RU sizes. The unique design supports the mounting of equipment that require cage nuts or threaded holes.



If you have 16" or 18" or 24" OC studs, install 2 bars vertically, directly on top of your studs. Then, install 2 bars horizontally between the vertical bars using some engineered unistrut ...



In this guide, we'll see the tools you'll need, the best and proven practices for server rack setup and network rack setup, and the detailed steps you'll need to follow to achieve an efficient and ...



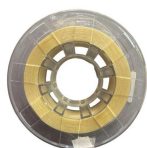
Mount the wall bracket to the desired location (Figure 2). You can install the bracket over an Ethernet jack, or you can run the Ethernet network cable to a jack nearby. Use the level to ensure ...



From the inside of the Vertical Mounting Rails (E), insert one of the flanges of the cage nut through the square opening. Press it against the side of the square opening. Compress the cage nut at the sides ...



Did you know that vertical wall mount server racks can save up to 50% of your floor space? Plus, they make it easy to keep your tech gear organized. If you want to set one up at home or in a small office, ...



This section provides information on how to install rack-mount equipment in the NetShelter Four-Post Rack. The instructions provided with the equipment contain more detailed information.



Kit includes all associated hardware to install brackets into any of the Vertical Wall-Mount Cabinet frames.



This is not only an example of how our vertical wall mount can be utilized in a business setting but how you can add reducer brackets, converters or adapters that allow you to mount all types of equipment ...

Contact Us

For more information, pricing, or custom network solutions, please contact us:

Website: <https://www.hashherbcafe.co.za>

Email: hello@hashherbcafe.co.za

Phone: +27 63 814 7295

Address: 15 Galaxy Road, Linbro Business Park, Johannesburg, 2065, South Africa

This document is for informational purposes only. Specifications subject to change without notice.

