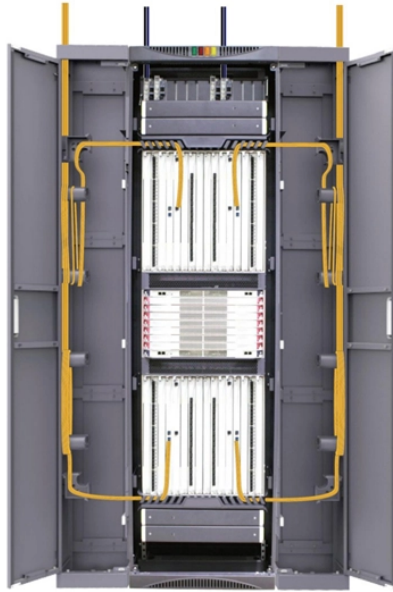


How to install the ground wire in an indoor distribution box

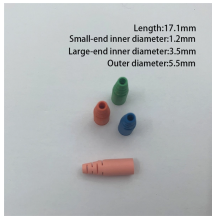


Overview

Thread the ground wire through the knockout hole in the appropriate location (usually on the bottom or the side) on the service panel. Locate grounding bar and attach the ground wire. Current will. The correct connection method of Distribution box grounding wire mainly includes the following steps: 1. Here is the full video • How To Wire A Main Electrical Panel - Star. more Audio tracks for some languages were automatically generated. You should bury the rod up to 8 feet and leave it 3 to 4.



How to install the ground wire in an indoor distribution box



Ground wire is one of the most important electrical safety factors. But are you in the dark about grounding the electrical panel? Read on.



Installing a ground wire to your electrical service panel can be done easily with a few hand tools. The codes of some localities differ from NEC (National Electric Code) standards.



How to make proper & safe electrical ground wiring connections in the box: This article describes options for connecting a metal electrical box to the grounding conductor & connecting the ...



Cables with ground wires come into the box, and the ground wires are attached to the metal box. Armored cable which is legitimate for carrying ground ...



Install a ground wire: If your box doesn't already have a ground wire, you need to install one first. One end of the ground wire should be connected to a metal part of the box and...



In a metal box environment, the equipment grounding conductor must first be bonded to the box itself. This is done using a short wire, known as a pigtail, secured to the metal box with a ...



Generally, copper core wire is selected as the ground wire and connected to the PE wiring bar. When connecting, it is necessary to strip the wire for a distance, then connect it to the ...



Cables with ground wires come into the box, and the ground wires are attached to the metal box. Armored cable which is legitimate for carrying ground has been used to reach the box, ...



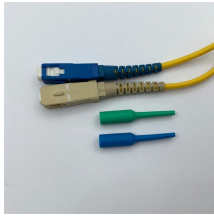
Generally, copper core wire is selected as the ground wire and connected to the PE wiring bar. When connecting, it is necessary to strip the wire ...



In this video, I show how I installed the ground wire to my panel box. Here is the full video • [How To Wire A Main Electrical Panel - Star...](#)



In this video, I show how I installed the ground wire to my panel box. Here is the full video • [How To Wire A Main Electrical Panel - Star...](#)



This article will tell you how to run a ground wire to an electrical panel & the importance of doing this task.



Grounding an electrical panel is an important step to keep your home and family safe. It gives extra electricity a safe path to the ground, helping prevent electric shocks, fires, and damage to ...

Contact Us

For more information, pricing, or custom network solutions, please contact us:

Website: <https://www.hashherbcafe.co.za>

Email: hello@hashherbcafe.co.za

Phone: +27 63 814 7295

Address: 15 Galaxy Road, Linbro Business Park, Johannesburg, 2065, South Africa

This document is for informational purposes only. Specifications subject to change without notice.

