

How to install the bracket behind the distribution box

Huijue engineering specific Fiber optic

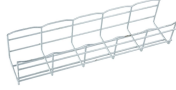
HJ GROUP offers a wide variety of product types for you to choose from.



Overview

Simply slide the bracket to the width required and snap both ends of the bracket to the stud and secure with screws. Plus, the BBA and BBA-4 box mounting brackets easily snaps onto the BBT-HF bracket and accepts 4", 4-11/16" and 5" electrical box sizes. With the latest design, it can be confusing. Assemble the mounting bracket 4. Let's see what factors need to be taken care of when choosing the installation place. Accessibility is one of the most. To field assemble: Separate bracket sections by bending at the joining tabs several times. This video helps you understand how to install. Sufficient pre-installation preparation is the basis for the safe and smooth installation of the distribution box, mainly including the following aspects: Conduct a detailed survey of the installation site to determine the installation location of the cable distribution box. The installation. This project illustrates how to install an "Old Work" Low Voltage Mounting Bracket for a RJ-45 Ethernet jack network connection. "Old work" means it's designed for cutting a new hole and fastened by swing clamps that grab the back of the wall panel.

How to install the bracket behind the distribution box



We will show you how we mount to the ****studs*** using different types of ***metal electrical box****. This video helps you understand how to install an ****adjustable box*** and ****junction box****.



Mounting new electrical boxes is a simple process, but the job does require careful planning. Whether you are upgrading the electrical system in an old home or planning your electrical ...



From floor-mount to wall-mount box supports, we offer a variety of options to mount just one or up to 5 boxes. Find out how to save on installation time.



This project illustrates how to install an “Old Work” Low Voltage Mounting Bracket for a RJ-45 Ethernet jack network connection.



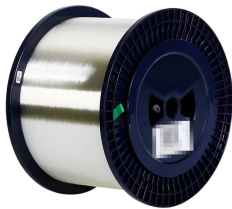
Mount J-Box to the bracket using a minimum of two (2) screws through existing mounting holes in box. #8 x 5/8" self-drilling sheet metal screws are recommended. Application in conformance to local codes.



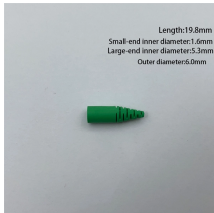
Install mounting brackets or hardware securely, following manufacturer instructions and ensuring proper alignment. Run the necessary conduits or cable glands to bring the electrical supply and outgoing ...



The trickiest part of installing inner components of a distribution box is that the components' heights are irregular. E-Abel's flexible mounting bracket can solve this problem easily.



To install the Rack Power Distribution Unit (Rack PDU) using the mounting brackets, install it on a vertical-mounting rail in the rack or enclosure. Note: In order to mount the Rack PDU using the ...



This article provides a detailed overview of the entire process of installing a distribution box, from pre-installation preparation to post-installation maintenance, and summarizes common ...



Before starting the installation, finding a proper place for putting the distribution box is crucial, because it largely decides the safety and convenience of maintenance. Let's see what factors ...

Contact Us

For more information, pricing, or custom network solutions, please contact us:

Website: <https://www.hashherbcafe.co.za>

Email: hello@hashherbcafe.co.za

Phone: +27 63 814 7295

Address: 15 Galaxy Road, Linbro Business Park, Johannesburg, 2065, South Africa

This document is for informational purposes only. Specifications subject to change without notice.

