

How to install fiber optic sensor lenses



How to install fiber optic sensor lenses



There are various systems of fiber optic sensors (sensing mostly non-electric parameters, like temperature, mechanical strain or pressure), many of them using ...



This Application Note is intended to guide users of Luna's High Definition Fiber Optic Sensing (HD-FOS) system (the ODiSI) through the simple process of mounting a fiber sensor onto the surface of a test ...



[Click to download the ODiSI Fiber Optic Sensor Installation Guide.](#)



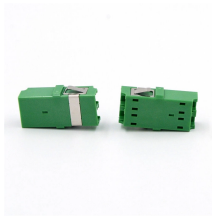
The manufacture procedures of the pre-embedded fiber optic sensors are described in detail. Finally, the issues on the installation of the fiber optic pre-embedded bar sensor into host ...



What Is a Fiber Sensor? A Fiber Sensor is a type of Photoelectric Sensor that enables detection of objects in narrow locations by transmitting light from a Fiber Amplifier Unit with a Fiber Unit.



Sensuron's Fiber Optics Sensing (FOS) provides hundreds of strain measurement points along a single fiber. In this video, the entire process of ...



This video demonstrates the process of installing a fiber optic sensor to a substrate for measuring distributed mechanical strain.



This article provides an overview of fiber optic sensor installation methods to help readers understand how a high-resolution distributed sensing system can be used in their applications.



When installation space is extremely limited or the objects to be detected are tiny, fiber-optic sensors are the ideal solution. If it is necessary for even higher requirements to be fulfilled, such as sensing ...



Fiber optic sensors are compact because the detection circuit is located in the amplifier, allowing for detection even in narrow spaces. Installation and adjustment are easy and the devices have high ...



Fiber Optic Sensing (FOS) systems have been in use for more than three decades. However, there still is some confusion about the possible and best installation methods.



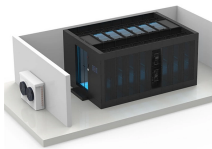
This instructor-led course provides a fundamental understanding of fiber optics and the practical hands-on skills training required to install and maintain fiber optic networks.



Introduction This guideline explains how to setup and mount the Keyence Digital Fiber Optic Sensor (FS-N11CN).



The successful installation of a fiber optic security system is achieved by a thorough understanding of the security needs of the site to be protected as well as proper deployment of the ...



This article provides an overview of fiber optic sensor installation ...



This document provides guidelines for installing the Sensor Fiber and testing the installed system. For specific product information, refer to the "Arc Protection Relay Buyer's Guide."

Contact Us

For more information, pricing, or custom network solutions, please contact us:

Website: <https://www.hashherbcafe.co.za>

Email: hello@hashherbcafe.co.za

Phone: +27 63 814 7295

Address: 15 Galaxy Road, Linbro Business Park, Johannesburg, 2065, South Africa

This document is for informational purposes only. Specifications subject to change without notice.

