

How to install cable trays with large spans



Overview

Learn how to install cable trays for large-scale projects with our professional, step-by-step guide covering industry standards, safety protocols, and efficient routing techniques. The majority of large projects are governed by organizations such as NEMA or IEC. The supports are typically placed every 1.0m): It saves money and uses fewer parts, but needs a tray that is. This guide covers the critical steps, from selecting the right electrical cable tray and performing accurate cable fill calculations to managing a safe cable pull through and ensuring all bonding and grounding requirements are met. For licensed electricians, mastering these principles is essential. en completely installed, without damage either to conductors or structural system use maintain spacing or to keep cables in place when the tray is ect the minimum bend ra-dius for cables as they exit the bottom of the cable tray. Factor in clearance, load capacity, and cable separation needs from the get-go. Before starting, ensure you have. On a project of considerable scope there are large quantities of strut, threaded rod, clips, connectors, ladder tray, fittings as well as hardware, all intended for specific functions and locations. Field personnel must be free to do their disciplines of electrical constructions, testing.

How to install cable trays with large spans



A practical guide to product selection and installation This guide for engineers and installers has been developed by ABB as a practical reference regarding cable tray characteristics, installation, and ...



Step-by-step cable tray and conduit installation method with safety, quality and inspection procedures as per IEEE standards.



Core rules for selecting, installing, grounding, and filling cable trays—clearances, materials, separation, and bonding explained.



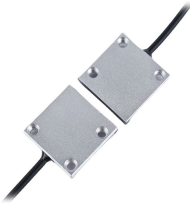
This publication is intended as a practical guide for the proper and safe* installation of cable ladder systems, cable tray systems, channel support systems and associated supports.



Learn how to install cable trays for large-scale projects with our professional, step-by-step guide covering industry standards, safety protocols, and efficient routing techniques.



Whether you're building a commercial setup or upgrading an industrial plant, proper cable tray installation ensures neat wiring, safe access, and easy maintenance. But before you lay the first tray ...



To install branch-piece (WPRAA) cut out the side rail of the wide-span cable tray in a width $B =$ connecting cable tray width + 900 mm flush with the floor ($H = 23$ mm).



This document provides details on installing cable trays and their support systems. It includes diagrams showing how to mount cable trays on walls using pre ...



This guide covers the critical steps, from selecting the right electrical cable tray and performing accurate cable fill calculations to managing a safe cable pull through and ensuring all bonding and grounding ...



Installing a cable tray system requires careful planning to ensure it can support the weight of the cables and adheres to electrical safety codes. Here is a step-by-step guide on how to install a ...



To ensure that the complete ladder tray wiring system performs as designed, it is important that it is properly installed. Personal injury as well as property damage will result if proper installation and ...

Contact Us

For more information, pricing, or custom network solutions, please contact us:

Website: <https://www.hashherbcafe.co.za>

Email: hello@hashherbcafe.co.za

Phone: +27 63 814 7295

Address: 15 Galaxy Road, Linbro Business Park, Johannesburg, 2065, South Africa

This document is for informational purposes only. Specifications subject to change without notice.

