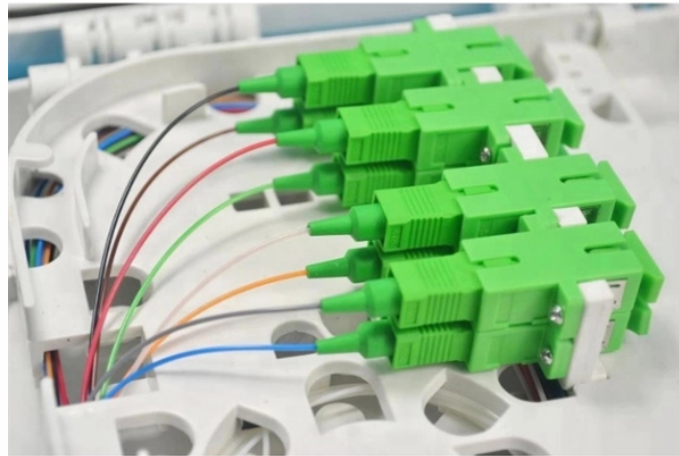


How to install a landscape hydroelectric distribution box



Overview

In this video, we'll walk you through the process of wiring a home distribution box with a detailed connection diagram. A great mix includes Calamagrostis acutiflora feather reed grass, Iris sibirica (Siberian Iris), Echinacea purpurea (Magnus), and Aster novae-angliae (Purple Dome). To hide an electric box in the. Planting small trees and shrubs around the electrical box can add to the scenery while hiding the box. For outdoor installations, the box must defend these sensitive splices against moisture, dust, temperature fluctuations, and physical impacts. Choose the right box based on environment (indoor/outdoor), load capacity, and durability. Check for proper IP/NEMA ratings and material quality. Ensure safe placement: install in. This document contains AWARENESS ONLY material to assist members of the Public and Industry Professionals to select the correct tree and location to avoid conflicts with the overhead and/or underground powerlines.

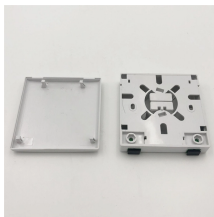
How to install a landscape hydroelectric distribution box



Individuals engaged in planning and/or planting under or around powerlines and electrical equipment, such as Landscape Architects, Landscapers, Municipalities or the public need to be aware of the ...



Landscaping creatively can make these utility boxes blend seamlessly into your garden, enhancing visual appeal while observing safety guidelines. Remember to dig safely around ...



Before starting the installation, finding a proper place for putting the distribution box is crucial, because it largely decides the safety and convenience of maintenance. Let's see what factors ...



Learn how to install a distribution box safely and correctly. Covers wiring, placement, standards, and expert tips for a compliant setup.



This article provides a comprehensive guide on the installation of a 300W off-grid micro hydro system for residential use. The system is designed to utilize a water ...



Planting small trees and shrubs around the electrical box can add to the scenery while hiding the box. However, it is critical to make sure the roots grow down and not move or mess up the electrical ...



This article provides a comprehensive guide on the installation of a 300W off-grid micro hydro system for residential use. The system is designed to utilize a water source with a flow rate of 15-30 gallons per ...



By adhering to this comprehensive guide, you can successfully navigate the installation and maintenance of your outdoor electric box, ensuring both functionality and durability for your outdoor ...



Learn how to install an outdoor electrical junction box safely. Covers weatherproof selection, sealing techniques, and compliant mounting.



This guide explains the different types of outdoor electrical boxes, costs, installation steps, and safety measures needed for a reliable and code-compliant installation.



In this video, we'll walk you through the process of wiring a home distribution box with a detailed connection diagram.

Contact Us

For more information, pricing, or custom network solutions, please contact us:

Website: <https://www.hashherbcafe.co.za>

Email: hello@hashherbcafe.co.za

Phone: +27 63 814 7295

Address: 15 Galaxy Road, Linbro Business Park, Johannesburg, 2065, South Africa

This document is for informational purposes only. Specifications subject to change without notice.

