

How to insert a Huijue gigabit optical module



Overview

Identify the alignment key on the SFP module (a small groove or ridge on one side). Apply firm, even pressure directly along the. Without the prior written consent of Ruijie Networks, no organization or individual is permitted to reproduce, extract, back up, modify, or distribute the content of this document in any manner or form. After the optical cable is plugged into the transceiver, the LINK/ACT LED on the switch turns on. The SFP module can be described as a smaller version of the Giga Bitra e Interface Converter (GBIC), also referred to as a. An optical module is an optoelectronic conversion device that transmits data by converting electrical signals into optical signals. Whether you're upgrading bandwidth, replacing a faulty unit, or reconfiguring your topology, knowing. Before installing an SFP or SFP+ module, we need to know some caution tips first.

How to insert a Huijue gigabit optical module



Grasp the SFP28 transceiver module between your thumb and index fingers and slide the module into the socket until you feel the module snap into place, as shown in the following figure.



This is just a quick video on how to install SFP modules, and a bit of explanation of what to look for when purchasing SFP modules for your switches.



Align the module with the device's SFP port, ensuring TX/RX labels match the cable's direction. Gently push the module until it clicks into place (a latch will secure it).



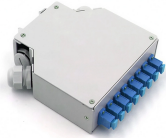
Remove protective caps from optical fiber connectors, insert optical fibers into the optical transceiver, and connect the fiber to the peer device. Ensure that the Tx and Rx ports are correctly connected.



To insert an SFP or SFP+ module into the open SFP port, do the following. Note: Close the latch before inserting the SFP or SFP+ module. Align the SFP module with the port, with the ...



Reveal the handle of the SFP module to lock against the snap on top of the module, and pinch the both sides of the SFP module to push it levelly and slowly into the optical module slot until the optical ...



These installation instructions provide overview and specification information for small form-factor pluggable (SFP/ SFP+/SFP28) modules, as well as instructions for installing and removing the modules.



Inserting and Removing Optical Modules: When inserting or removing optical modules, gently insert the module into the slot, ensuring proper alignment of the interface.



Click in to download Ruijie Optical Transceiver Hardware Installation and Reference Guide (V4.1) or get more details of this document. Ruijie Networks provides this basic information for ...



Install optical modules safely with ESD protection, proper handling, and dust control. Follow these steps to avoid damage and ensure network reliability.

Contact Us

For more information, pricing, or custom network solutions, please contact us:

Website: <https://www.hashherbcafe.co.za>

Email: hello@hashherbcafe.co.za

Phone: +27 63 814 7295

Address: 15 Galaxy Road, Linbro Business Park, Johannesburg, 2065, South Africa

This document is for informational purposes only. Specifications subject to change without notice.

