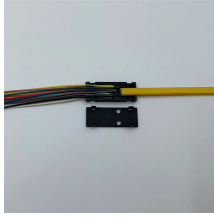


How to identify the model of cable tray elbow



How to identify the model of cable tray elbow



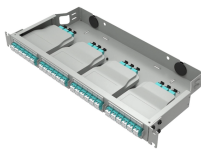
VSteel, galvanized according to DIN EN ISO 50 961/50979 and DIN EN ISO 2081, blued, (Replacement galvanized according to DIN EN ISO 4042) GSteel, galvanized according to DIN EN ISO 50 ...



Fujian, China Model Number 200*100 Brand Name JS Application Cable Laying Certification ISO9001 Thickness 0.8-3.0mm Material For Choosing Steel,Stainless steel,aluminum Feature Corrosion ...



The load capacity of the cable trays according to the support width can be read off in the diagram using load curves - here, shown as an example for a cable tray with the tray widths 100 to 600 mm.



RES 85.600 Elbow 90° for cable tray, 85x602 mm, with unperforated side beams, steel, pre-galvanised according to DIN EN 10346, incl. accessories Add to Cart €0.00 Excl. 0% VAT EAN 4013339238903 ...



Data presented on these drawings is as accurate as preliminary surveys and planning can determine until final equipment selection is made. Accuracy is not guaranteed and field verification of all ...



Cope zero tangent elbow fitting for compact cable tray layouts. Saves space and eases installation.



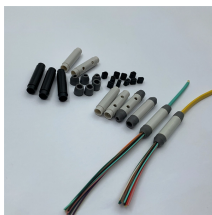
Cable tray length is selected based on the load to be supported, the distance between the supports (also referred to as the span), and handling and installation constraints.



The aluminum I-beam design of ITray is perfect for industrial installations with large diameter cables in long span situations, minimizing total tray width and creating a smooth transition between straight ...



The document provides specifications for metallic cable tray elbows and fittings, including catalog numbers, dimensions, and fitting series. It details the standard and custom radius options available, ...



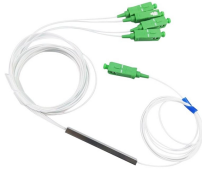
The design and cost of the cable tray is greatly affected by this designation. In order to determine the most appropriate and economical system, a class should be selected that reflects the actual total ...



When fitting cable trays and their accessories, the products are cut on site to create changes of direction, adjust sections, etc. Damage can also occur during handling; as a result, both the ...



Fitting and accessories. with the same or different width of the cable run. All fittings are available in sizes and types corresponding to the straight cable tray sections. These fitting are including: elbow, ...



Refers to the approximate height of a cable tray used for specifying. Selecting a specific height will show cable trays with that height, as well as cable tray accessories compatible with that height.

Contact Us

For more information, pricing, or custom network solutions, please contact us:

Website: <https://www.hashherbcafe.co.za>

Email: hello@hashherbcafe.co.za

Phone: +27 63 814 7295

Address: 15 Galaxy Road, Linbro Business Park, Johannesburg, 2065, South Africa

This document is for informational purposes only. Specifications subject to change without notice.

