

How to handle cutting fiber optic cable lines



How to handle cutting fiber optic cable lines



The following article explores best practices when pulling fiber optic cables and cable assemblies. Following these guidelines will help protect your system's optical performance, reduce ...



Learn how to safely and accurately cut fiber optic cables using the right tools and techniques for optimal performance.



Cut the cable and complete the take-up process. When finished, secure the top end of cable to the inside flange that is closer to the cable end, with tie wrap or a staple for wooden reels.



Cutting fiber cable requires meticulous technique and specialized tools to ensure a clean, precise break for proper termination and minimal signal loss. This guide delves into how to cut fiber ...



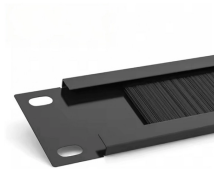
A cut or damaged fiber optic cable can disrupt your network, but with the right tools, repairs can be made swiftly. This guide provides essential steps and tools necessary for repairing a ...



Always handle fiber optic cables carefully to avoid microbends or damage that could affect performance. Avoid splicing if possible; longer cable runs with fewer splices are more efficient ...



When handling fiber optic cables, a few simple habits can help you avoid costly mistakes and ensure safe, reliable installations.



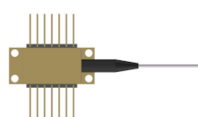
While a cut or damaged fiber optic cable can temporarily take your network down, it is possible to quickly fix the cable with the right tools. This wikiHow article will teach you how to splice a cut fiber optic ...



The most common reason for interrupted fiber optic service is fiber optic cable cuts. And the list of causes of causes for fiber cuts, believe it or not, is a long one. In this article, we've rounded up the ...



Avoid costly fiber optic installation errors. Learn the top 10 things NOT to do with fiber optic cables and how to handle them safely.



Repair cut fiber cables with this step-by-step guide. Learn proper tools, techniques, and tips for effective fixes.

Contact Us

For more information, pricing, or custom network solutions, please contact us:

Website: <https://www.hashherbcafe.co.za>

Email: hello@hashherbcafe.co.za

Phone: +27 63 814 7295

Address: 15 Galaxy Road, Linbro Business Park, Johannesburg, 2065, South Africa

This document is for informational purposes only. Specifications subject to change without notice.

