

How to fix optical fibers in a vertical cable tray



How to fix optical fibers in a vertical cable tray



By understanding these key elements and following the outlined steps, you can effectively repair fiber optic cables and maintain the high-performance network necessary for today's ...



Fiber Optic Cable Tray and Vertical Riser Guidelines - Optical Cable Corporation. Products. Fiber. Copper. Hybrid. Cabinets, Racks, Enclosures. Deployable Solutions. Industries. Oil & Gas. Mining. ...



We offer the largest selection of vertical cable management options in the industry. From down spouts and down elbows to vertical ducts and tubes, FiberGuide provides a vast number of ways in which ...



Techniques include inspecting connectors for dirt or damage, testing fiber-optic signal strength with optical power meters, and using OTDRs (Optical Time Domain Reflectometers) to locate faults along ...



All fiber optic cables have specifications that must not be exceeded during installation to prevent irreparable damage to the cable. This includes pulling tension, minimum bend radius and crush loads.



Learn about fiber optic cable tray splicing techniques in this informative webpage. Discover the best practices for splicing fiber optic cables in cable trays.



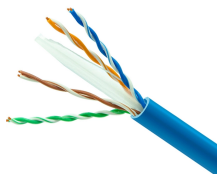
This comprehensive guide outlines professional fiber optic repair protocols that align with industry best practices. Adhering to precise methodologies, we can mend impaired cables with ...



To fix it, first use a VFL laser or an OTDR to pinpoint the damage. For a permanent fix, fusion splicing is better than mechanical connectors because it prevents signal loss. Always protect ...



I start by attaching the tube to the splice tray, then flare out the fibers, making sure they are untwisted. As I splice each fiber together, I start by putting the splice tube in its holder slot, then by making ...



GENERAL PROCEDURE Following is a general guideline for installing a fiber tray system:

Contact Us

For more information, pricing, or custom network solutions, please contact us:

Website: <https://www.hashherbcafe.co.za>

Email: hello@hashherbcafe.co.za

Phone: +27 63 814 7295

Address: 15 Galaxy Road, Linbro Business Park, Johannesburg, 2065, South Africa

This document is for informational purposes only. Specifications subject to change without notice.

