

How to determine the path of cable trays



Overview

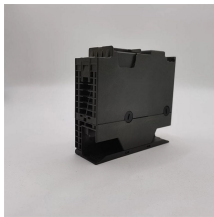
This article will guide you through the various stages of cable tray path planning, highlighting best practices for safety, feasibility, cost-effectiveness, and environmental consideration. Q1: What is the primary purpose of cable tray sizing and calculation?

Ensure the total cable area does not exceed the maximum fill area permitted by electrical codes (e. Our free calculator helps you determine the correct tray size based on NEC and IEC standards. Follow these simple steps: Define Tray Dimensions: Enter the width and depth of your planned cable tray (in mm or inches). While designing cable tray. Hubbell's NEXTFRAME® Ladder Tray is the effective and widely used cable runway that supports and delivers bundles of cable between cabinets, racks, and closets, along walls, and suspended from ceilings. The Ladder Tray features light, rugged, tubular steel construction.

How to determine the path of cable trays



In order to determine the most appropriate and economical system, a class should be selected that reflects the actual total working load and support span for each application. Some applications may ...



The National Electrical Code (NEC), specifically Article 392 (Cable Trays), provides strict rules on cable fill area, maximum cable sizes, and acceptable loading depending on the type of conductor (single or ...



Cable tray installation must comply with specific technical standards to ensure electrical safety, system reliability, and long-term maintainability. This document outlines the key requirements for cable tray ...



This guide covers the critical steps, from selecting the right electrical cable tray and performing accurate cable fill calculations to managing a safe cable pull through and ensuring all bonding and grounding ...



A spread sheet based wiring management program may be used to control the cable fills in the cable tray. While such a system may also be used for controlling conduit fill, large numbers of individual ...



Explore the essentials of cable tray layout and section design in electrical systems, ensuring optimal cable management and support.



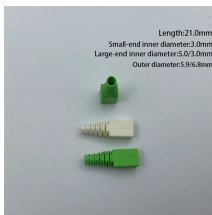
This article outlines the key steps for creating tray paths and routing cables for your project, whether done manually or automatically. We will also cover how to calculate your DC cables and the ...



Our wind certification report provides you with list of acceptable B-Line series cable tray supports, fittings and covers based off of the environmental conditions, cable loading, and type of cable tray in your ...



Cable tray installation must comply with specific technical standards to ensure electrical safety, system reliability, and long-term maintainability. This document ...



Learn how to effectively plan cable tray paths for urban infrastructure, ensuring safety, cost-effectiveness, and future expansion. Explore principles, methods, and case studies for optimal ...



Easily calculate cable tray fill ratios with our free tool. Supports mixed cable sizes, NEC 40% rules, and metric/imperial units. Download your PDF report instantly.

Contact Us

For more information, pricing, or custom network solutions, please contact us:

Website: <https://www.hashherbcafe.co.za>

Email: hello@hashherbcafe.co.za

Phone: +27 63 814 7295

Address: 15 Galaxy Road, Linbro Business Park, Johannesburg, 2065, South Africa

This document is for informational purposes only. Specifications subject to change without notice.

