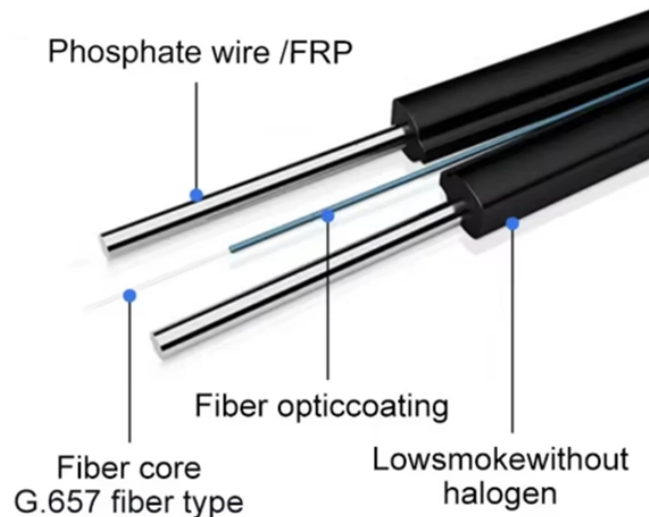


How to determine the grounding of a construction power distribution box



Overview

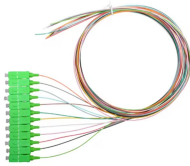
Here's a basic guide on how to measure ground resistance and test the grounding system's proper functionality using a multimeter: According to NEC 250. How to check if an area is grounded?

Use a multimeter, receptacle tester, and visual inspection of bonding/earthing, ground rod, and service panel; verify ground resistance and continuity per NEC safety guidelines. NFPA 70: National Electrical Code Article 250 covers the minimum requirements for grounding and bonding and, although the. California's grounding requirements come from the 2025 California Electrical Code (CEC), which took effect January 1, 2026, and applies to all new electrical installations and major modifications statewide. It ensures stability and provides a critical path for fault current, preventing severe shocks and fire hazards.

How to determine the grounding of a construction power distribution



The National Electrical Code (NEC) lists eight specific methods to make grounding and bonding connections in Sec. 250.8. Failure to install these connections properly can result in shock, ...



Learn how to connect equipment grounding conductors to receptacles and keep their continuity in boxes.



Learn the proper electrical grounding terminologies. Understand National Electrical Code grounding and bonding requirements for solidly grounded alternating current low-voltage systems ...



Testing the grounding system using a multimeter is an essential step to ensure the safety and effectiveness of electrical installations. Here's a general guide on how to test the grounding system ...



Proper grounding is the non-negotiable foundation of electrical safety. It ensures stability and provides a critical path for fault current, preventing severe shocks and fire hazards.



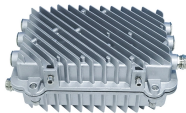
The core grounding and bonding rules live in Article 250, which covers everything from the electrodes buried in the earth to the conductors that connect your panel, equipment, and metal piping ...



These tables help you properly size wiring for the grounding and bonding of your electrical system. Becoming familiar with the proper use of these tables can help installers ensure proper grounding ...



Learn how to detect faulty grounding, verify your ground wire, and perform comprehensive grounding checks in any setting. For a deeper overview of safety principles, see this guide to electrical ...



Whether you're a seasoned pro or just starting out, this comprehensive guide will give you practical insights into proper grounding techniques, with a special focus on how selecting quality materials ...



Common grounding electrodes include rods, plates, pipes, ground rings, metal in-ground support structures and concrete-encased electrodes. All grounding electrodes at each building or ...

Contact Us

For more information, pricing, or custom network solutions, please contact us:

Website: <https://www.hashherbcafe.co.za>

Email: hello@hashherbcafe.co.za

Phone: +27 63 814 7295

Address: 15 Galaxy Road, Linbro Business Park, Johannesburg, 2065, South Africa

This document is for informational purposes only. Specifications subject to change without notice.

