

How to cut grooves in a concealed wiring distribution box



Overview

This video shows a common residential construction step: installing concealed electrical conduits in wall grooves to protect wires from moisture, chemicals, and pests, improve fire safety, and allow easy replacement without breaking the wall. The grooves are neatly cut and. In this article, we explain how to properly make grooves for electrical installations. You will learn how to break down walls, what power tools to use, and how to plan grooves for installation conduits so that the acoustic insulation parameters are not reduced. If you cut directly over a stud and chisel out at least a 3/4 x 3/4 section of the stud, you can lay your wire in the groove and cap it with a steel plate to prevent nails and screws from penetrating. Simpson Strong-Tie - NS1-R 1 1/2 in.

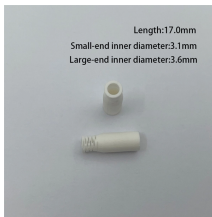
How to cut grooves in a concealed wiring distribution box



Cutting drywall for electrical devices requires precision with each measurement. The result needs to look close to perfect so no issues arise in the future.



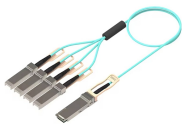
In order to properly arrange and effectively mask the pipes and conduits, special recesses and shallow installation grooves are created in the walls. In this article, we explain how to ...



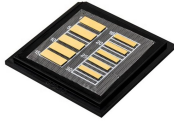
You are already into sheetrock repair, so making a couple of holes won't matter. If you cut directly over a stud and chisel out at least a 3/4 x 3/4 section of the stud, you can lay your wire in ...



This video shows a common residential construction step: installing concealed electrical conduits in wall grooves to protect wires from moisture, chemicals, and pests, improve fire safety, and...



Concealed Electrical Wiring Installation This video shows a common residential construction step: installing concealed electrical conduits in wall...



Knowing the best tool to cut grooves in wood is a fundamental skill that separates basic projects from professional-looking builds. Whether you're creating a hidden channel for wiring, a ...



Below, we'll explain how to measure your electrical box cutouts and use a rotary tool with a cutting bit to make them without ruining your new walls.



Discover 6 top wall groove machines for precise electrical wiring. From budget-friendly to professional models, find the perfect tool to cut clean channels without damaging walls.



The process of making grooves is called shtrobing, and simi grooves - "shtroba" or "shraba". How to do the correct way to do the walls under the wiring, according to what rules, what tool to use, and we will ...



This process is called cutting-in or retrofitting a box, and, of course, it requires boxes with special mounting mechanisms. Hold the new box at the same height as other outlet or switch boxes and ...

Contact Us

For more information, pricing, or custom network solutions, please contact us:

Website: <https://www.hashherbcafe.co.za>

Email: hello@hashherbcafe.co.za

Phone: +27 63 814 7295

Address: 15 Galaxy Road, Linbro Business Park, Johannesburg, 2065, South Africa

This document is for informational purposes only. Specifications subject to change without notice.

