

How to cut a cable tray tee



How to cut a cable tray tee



Refer to the images below to determine how many tray sections will be required to be cut from the tray for the corner splice. Ensure that the side wire cuts and the mid-section cuts are always symmetric.



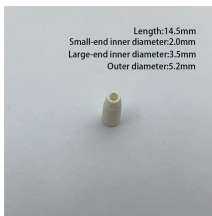
HOW TO MAKE TEE IN YOUR CABLE TRAY / PAANO MAG FABRICATE NG TEE SA CABLE TRAY JUB. TV



The document provides instructions for forming various bends and joints in electrical trunking and cable trays. It describes: 1) How to mark and cut a right-angle ...



Tees and X Junctions Wire Mesh Cable Tray Reducer and Tee Junction Instructions CABLE TRAY CUTTING & BENDING GUIDES CONFIGURING CABLE TRAYS FOR INSTALLATION Horizontal Tees



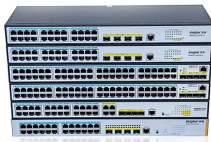
Instructions include the necessary cuts, splices, and connectors for the following assemblies:



The document provides instructions for forming various bends and joints in electrical trunking and cable trays. It describes: 1) How to mark and cut a right-angle internal bend in a section of trunking, ...



Cut wires with B-Line Angular Bolt Cutter, bend to create a bend, tee, or reducer. Do not use center cut blades. For the best results, use a WB30BC Angular Blade Offset Bolt Cutter with 24" (600 mm) long ...



Le chemin de câbles en treillis métallique et les accessoires Legrand/ Cablofil sont disponibles dans diverses finitions pour répondre à tous les besoins de l'industrie en termes de décoration ou de ...



Use this guide to learn the most effective installation practices when installing Cablofil tray. Each example of bends and tee's clearly illustrate proper tray cutting combined with recommended usage ...



In the Oglænd System Cutting Guideline you can easily find out what the optimal cutting lengths/intervals are for all modular products. As well as, learn about what's important to consider ...



Guide for making bends, tees, crosses, risers and reducers from straight sections of wire basket cable trays live at the project.

Contact Us

For more information, pricing, or custom network solutions, please contact us:

Website: <https://www.hashherbcafe.co.za>

Email: hello@hashherbcafe.co.za

Phone: +27 63 814 7295

Address: 15 Galaxy Road, Linbro Business Park, Johannesburg, 2065, South Africa

This document is for informational purposes only. Specifications subject to change without notice.

