

How to connect wires if the distribution box is too short

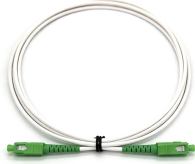


Overview

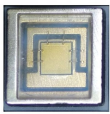
If you have an electrical box with wiring that is too short to make electrical connections to outlets, switches or even another junction box, you will need to add 'pigtails' to the wiring in order to lengthen the wiring so you can use it. A 'pigtail' is simply an extension that is added to a piece. The National Electrical Code requires at least 6 inches of wire inside the box. From where the non-metallic cable sheath ends to the wire tips should be a minimum of 6 inches. Options to Lengthen the Wires: Option 1: Check for. So, what happens when you go to change a device and the wires are just too short?

There are generally two ways to fix this: Sometimes you can loosen the box connector at the back of the box and pull more wire out. You might be able to get some extra slack, strip it, and make your connections.

How to connect wires if the distribution box is too short



Today we're talking about a common issue many DIYers and electricians run into: short electrical wires inside a device box—and how to fix them. Stick around and let's walk through it together.



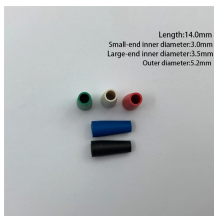
The solution was a commercial grade or heavy duty outlet that has rear insert screw clamps where the wires go straight in without needing to be bent to go around screws. There were ...



In this video, I'll walk you through safe and code-compliant ways to extend wires inside an electrical box. From ...



In this video I show you numerous ways to fix wires that are too short in an electrical box. This one of the most common mistakes when running electrical wires that are made by not just...



If your junction box isn't already set up with clamps, you may have to install some into the openings on the opposite ends of the box using pliers. Next, pull the wires you want to splice through ...



Expand the power of your DIY skills. Learn how to extend electrical ...



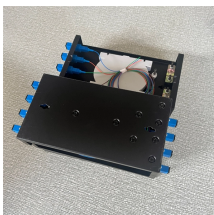
I've fixed that issue every way possible. The real trick is getting the existing nail on out without any extra damage. So if you wanted to do a whole wire replacement you can sometimes pop two boxes out ...



When I see a short wire, what can I do? There are close to ceiling junction boxes on top of the outlets where the wires come from, should I pull the short wire back into them and splice them ...



Expand the power of your DIY skills. Learn how to extend electrical wires and add a new fixture or install a new outlet.



If you have an electrical box with wiring that is too short to make electrical connections to outlets, switches or even another junction box, you will need to add "pigtailes" to the wiring in order to ...



In this video, I'll walk you through safe and code-compliant ways to extend wires inside an electrical box. From checking for slack with service loops to using pigtailes with wire nuts or Wago ...



Ensure wires are deactivated and assess their length before replacing an outlet. Seek additional slack or introduce new wiring to comply with electrical code requirements. Utilize ...

Contact Us

For more information, pricing, or custom network solutions, please contact us:

Website: <https://www.hashherbcafe.co.za>

Email: hello@hashherbcafe.co.za

Phone: +27 63 814 7295

Address: 15 Galaxy Road, Linbro Business Park, Johannesburg, 2065, South Africa

This document is for informational purposes only. Specifications subject to change without notice.

