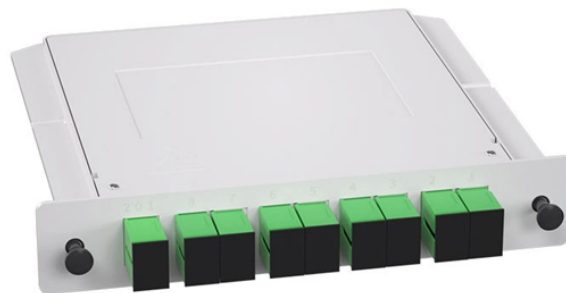


How to connect the wires coming out of the beam splitter



Overview

Connect one coax cable to your coax cable outlet, and to the splitter's "IN" connection. Enhance your understanding of cable distrib. more Dive into. A splitter is designed to attach several cables together in order to provide multiple outlets for one signal. In this scenario, you'll insert one end of the antenna coax into the splitter's input port, then attach two more coax cables to the splitter's output ports, and run each of these cables to. How do cable splitters work?

A TV splitter has one input for the signal to enter and outputs for distributing tasks.

How to connect the wires coming out of the beam splitter



This guide covers connecting a 2-way splitter to your coaxial cable, which can then be connected to two devices. The guide explains how to power off all devices, connect the cable to the splitter, and then ...



Connect the new two-way splitter plate to the coaxial cable. Replace the mounting screws and tighten them with the proper screwdriver. Install the outer wall plate and tighten the ...



In this scenario, you'll insert one end of the antenna coax into the splitter's input port, then attach two more coax cables to the splitter's output ports, and run each of these cables to a TV set. If ...



By using a coaxial cable splitter, you can distribute a single signal to multiple devices without significant loss of quality. Here's a step-by-step guide to help you through the process.



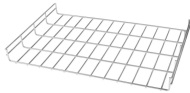
Attach additional coax cables to your splitter, tightening each against one of the coaxial cable splitter's output connections. Keeping each length of cable tied or wound will help you keep them organized ...



As it passes through the unit, the splitter will send half of the signal's power down one route and into one device. Then, it will deliver the other half down the second path to connect it with ...



As it passes through the unit, the splitter will send half of the signal's power down one route and into one device. Then, it will deliver the other half ...



In this step-by-step guide, we will outline the necessary tools, instructions, and considerations required to successfully install a 2-way coaxial splitter, making the process easy for ...



Watch as we walk you through the process of connecting a coaxial/TV cable to a two-way splitter, providing valuable insights and step-by-step instructions.



Connect one coax cable to your coax cable outlet, and to the splitter's "IN" connection. Connect your second coax cable to a device, and to one of the splitter's "OUT" connections.



Connect Output Cables: Connect coaxial cables from the "OUT" or "Output" ports of the splitter to your TV and/or modem. Again, ensure secure but not overtightened connections.

Contact Us

For more information, pricing, or custom network solutions, please contact us:

Website: <https://www.hashherbcafe.co.za>

Email: hello@hashherbcafe.co.za

Phone: +27 63 814 7295

Address: 15 Galaxy Road, Linbro Business Park, Johannesburg, 2065, South Africa

This document is for informational purposes only. Specifications subject to change without notice.

