

How to connect the two wires of the optical module



Overview

The simplest method: connect two cables pre-connectorized via a coupler (also called an adapter). Small Form-factor Pluggable modules (SFP module) are the workhorses of modern network connectivity, enabling flexible fiber optic or copper links between switches, routers, firewalls, and servers. 1G/10G SFP+: Standard for Gigabit and 10 Gigabit Ethernet. Never look directly into an optical module or the ends of optical fibers. Optical modules and connected fibers emit laser radiation. Therefore, this article introduces you to a small guide to the installation and removal of optical modules to ensure that you can operate them correctly and avoid unnecessary damage or malfunctions. This article explains when.

How to connect the two wires of the optical module



Optical Fiber Transmitters and Receivers: We'll guide you through connecting the optical fiber transmitter and receiver to your Arduino, ensuring a reliable data link.



The photograph suggests a QSFP+ optical module to SFP optical module interconnection method. The QSFP+ optical modules and SFP+ optical modules on each aspects are linked to the ...



Three methods for connecting two fiber optic cables: fusion splicing, mechanical coupler, and splicing. Comparative table and practical guide.



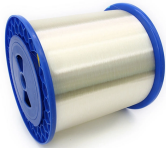
The PoE switch with SFP can be linked together by using the fiber optical cable. The advantages of fiber optical connection are high speed, long distance, low latency.



This optical transceiver tutorial will introduce how to install SFP module, how to remove SFP module, and give some insights on the operation precautions. Following these tips will maintain ...



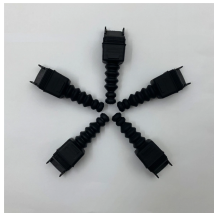
To connect a fiber optic cable to SFP optical module, first ensure the SFP is fully inserted into the network port until it "clicks", then remove the dust caps from both the SFP and the LC fiber optic ...



Install optical modules safely with ESD protection, proper handling, and dust control. Follow these steps to avoid damage and ensure network reliability.



Identify the optical fibers to be connected to the optical module. Remove the dust caps from the optical fibers and insert the optical fibers to the bores of the optical module.



Align the module with the device's SFP port, ensuring TX/RX labels match the cable's direction. Gently push the module until it clicks into place (a latch will secure it).



Gently unpack the optical module and take out the optical module. 2. Hold both sides of the optical module with your hands to ensure it is aligned with the slot. Push the optical module ...

Contact Us

For more information, pricing, or custom network solutions, please contact us:

Website: <https://www.hashherbcafe.co.za>

Email: hello@hashherbcafe.co.za

Phone: +27 63 814 7295

Address: 15 Galaxy Road, Linbro Business Park, Johannesburg, 2065, South Africa

This document is for informational purposes only. Specifications subject to change without notice.

