

How to connect a wireless switch



Overview

This beginner-friendly guide walks you through every step: the tools you'll need, how to wire a smart switch and installation costs. A wireless switch is a high-tech option to lighting a room in your home. It offers several practical advantages that can significantly enhance your lifestyle. This quick and easy process can be completed in just five minutes, without the need for drilling or causing any damage to walls. Whether you live in the US, UK, or EU, we'll cover regional wiring differences so you don't get stuck. Adding a wireless light switch to an existing circuit eliminates the need for destructive wall demolition and complex wiring runs, offering a streamlined method to gain new control points. This technology separates the electrical connection from the physical control, providing a convenient.

How to connect a wireless switch



We show you how to add a wireless light switch to an existing circuit by installing a receiver above your light fixture and mounting a switch to the wall.



Length: 25mm
Small-end inner diameter: 3.5mm
Large-end inner diameter: 4.0mm
Outer diameter: 6.0mm

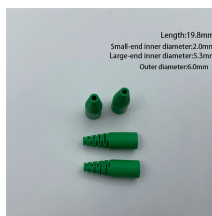
Knowing how to install a wireless light switch adds a convenient option to lighting a room. Read this guide on how to do installation quickly and safely.



In this guide, we'll walk you through everything you need to know about how to install wireless light switch. We'll explain why this technology is a smart choice for any home and provide a ...



By following these steps, you can easily install a wireless light switch kit in your home and enjoy the convenience it brings. No more messy wires or complicated installations.



Length: 19.8mm
Small-end inner diameter: 2.0mm
Large-end inner diameter: 3.3mm
Outer diameter: 6.0mm

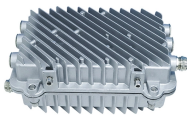
Are you finding it difficult to reach a light switch after reconfiguring a room in your house? Consider installing a wireless switch as a solution. This quick and easy process can be...



Follow step-by-step installation instructions including gathering tools, turning off power, removing existing switch, connecting wires, attaching the new switch, and testing functionality.



Adding a wireless light switch to an existing circuit eliminates the need for destructive wall demolition and complex wiring runs, offering a streamlined method to gain new control points.



Learn how to install a smart switch with our beginner-friendly guide. Step-by-step wiring instructions (single-pole & 3-way), tools, tips and installation costs.



In this guide, you'll learn exactly how to install a smart light switch step by step — from removing your old switch safely to wiring, connecting to Wi-Fi, and even troubleshooting common ...



Installing a wireless light switch is a simple upgrade that you can accomplish in an hour or less. You can control lights from as far as 100 feet away without running any wires through the...

Contact Us

For more information, pricing, or custom network solutions, please contact us:

Website: <https://www.hashherbcafe.co.za>

Email: hello@hashherbcafe.co.za

Phone: +27 63 814 7295

Address: 15 Galaxy Road, Linbro Business Park, Johannesburg, 2065, South Africa

This document is for informational purposes only. Specifications subject to change without notice.

