

## How to connect a single port to a fiber optic panel socket

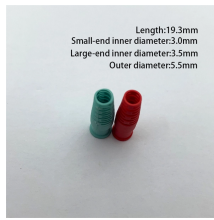


### Overview

Run incoming fiber cable through the box's entry port. Connect ONT to socket with patch cable (SC/APC to SC/APC). Installing a fiber wall socket (also called an FTTH outlet or optical termination point) is critical for maximizing your fiber internet speed and reliability. While ISPs often handle this, DIY installation can save time and money—if done correctly. Why Use Fiber Optic Internet?

Before diving into the setup, let's quickly recap why fiber optics are worth the effort: Lightning-fast speeds (up to 1 Gbps or higher). It ensures a clean, stable interface between the ISP's fiber network and your router—impacting speed, latency. Running fiber internally involves extending this high-speed link from the service entry point to a centralized location, such as a dedicated media closet or network rack. This DIY effort is undertaken to maximize performance, improve aesthetics, or relocate the Optical Network Terminal (ONT) to a.

## How to connect a single port to a fiber optic panel socket



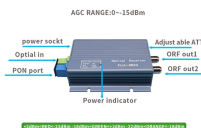
Have any questions? Talk with us directly using LiveChat.



If you are planning to install a fiber optic wall socket in your home, you will need to know how to properly install and use it. This article will cover how to choose the right wall socket for your ...



What is a Fiber Wall Socket? A fiber wall socket houses the fiber connector that terminates the incoming fiber cable. It protects the delicate fiber end-face from dust, bends, and...



However, setting up a fiber optic connection to your router can seem daunting if you're unfamiliar with the process. In this guide, we'll walk you through how to connect a fiber...



Running, walking, cycling, swimming, skiing, triathlons - no matter how you move, you can record your active lifestyle on Garmin Connect. It's the only online community created specifically for Garmin ...



Forgot password? Don't have an account?



I did not want to run fiber directly from device to device but instead install fiber outlets in the rooms. There are different options for this but I opted for the "FTTH Squeeze OTO" which is a ...



Forgot Password?



With Connect®, every click and conversation helps build a classroom where every learner feels seen. Artificial intelligence is now a routine part of student life, with 90% using generative AI—driving ...



UC Merced Connect platform serves as a central digital gateway to UC Merced, offering simplified access to campus resources, information, and personalized messaging.



Installing a fiber wall socket (also called an FTTH outlet or optical termination point) is critical for maximizing your fiber internet speed and reliability.



Complete guide to safely running internal fiber optic cable. Learn the methods for a high-performance, future-proof home network.



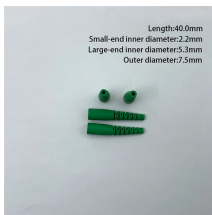
Whether you're a homeowner upgrading to fiber or a contractor planning network installations, this comprehensive buyer's guide will walk you through everything you need to know ...



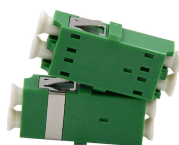
Forgot your password? By clicking "Sign In", I confirm that I have read and agree to the terms of the McGraw Hill Terms of Use, the Video Viewing Notice, the Consumer Purchase Terms if applicable, ...



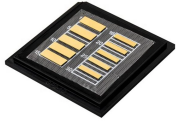
Once the fiber optic cable reaches the socket, it can be connected to a router or other networking devices via a fiber patch cable, providing seamless FTTH access.



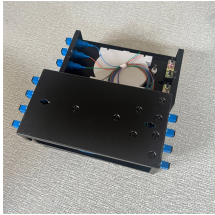
Please Login with your McGraw-Hill credentials to view this item.



Can't access your account? Usage Guidelines URL: Privacy Policy URL: ...



Connect, our all-in-one course platform streamlines your prep work, allows you to add instructors to any section, and surfaces more information in fewer clicks. Its innovative features empower you to take ...



Check your registered MFA device to respond, if applicable...



Installing FTTH wall outlets the right way improves internet speed. It also lowers signal loss. Pick the correct outlet type for your space size. Use single-port for small areas and multi-port for ...

## Contact Us

For more information, pricing, or custom network solutions, please contact us:

Website: <https://www.hashherbcafe.co.za>

Email: [hello@hashherbcafe.co.za](mailto:hello@hashherbcafe.co.za)

Phone: +27 63 814 7295

Address: 15 Galaxy Road, Linbro Business Park, Johannesburg, 2065, South Africa

This document is for informational purposes only. Specifications subject to change without notice.

