

How to connect a network terminal box



Overview

A fiber cable (drop) is run from a nearby terminal that could be either a pole or an underground box) to your home. A small box on the outside of your home called a NID is installed and the fiber is coiled in there and connected to a fiber that runs into the home. For quick download, open the camera on your smartphone and hold the camera over the QR code. After a few seconds, a notification will give you a link to open in your browser. Fiber internet works by sending data as beams of light through tiny glass strands (yes, really!). It converts those light signals into. A Router or Hub, often sent to you by your Service Provider, to enable your WiFi connection. Whether you are setting up a new telephone line or troubleshooting an existing one, understanding the basics of wiring is essential.

How to connect a network terminal box



Connect to the Network: Use an Ethernet cable to connect the ONT Box to your router or modem. Insert one end of the cable into the Ethernet port on the ONT Box and the other end into the ...



Connect to the Network: Use an Ethernet cable to connect the ONT Box to your router or modem. Insert one end of the cable into the Ethernet port on ...



Don't let optical network terminal (ONT) problems disrupt your fiber-optic experience. At BroadbandSearch, we developed this guide to help you avoid unnecessary service calls and prevent ...



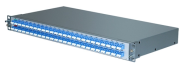
Find your AT& T Service Box (usually on the wall in the closet, living room, or basement). To connect the service box, remove the cover on the ONT (if applicable).



When it comes to ONT installation, you've got two main options: Indoor ONTs are installed inside your home, typically in a utility room, basement or ...



An ONT (Optical Network Terminal) is a small white Openreach branded box fitted inside the property. It connects your property to the full fibre network and it needs to be connected to a ...



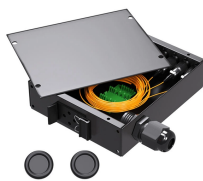
Learn about telephone line box wiring, including how to install and troubleshoot telephone line connections in your home. Discover the basics of telephone line box wiring, common problems, and ...



Troubleshooting your ONT An ONT, or Optical Network Terminal, is the box where your fiber internet connection enters your home to power your fiber network. Your ONT is typically located in your ...



When it comes to ONT installation, you've got two main options: Indoor ONTs are installed inside your home, typically in a utility room, basement or another centralized spot. Outdoor ONTs are ...



Here's how to set it up: Locate the ONT: If you're a new customer, a technician may install it during setup. Existing users can find it mounted on a wall (often in a basement, garage, or ...



A small box on the outside of your home called a NID is installed and the fiber is coiled in there and connected to a fiber that runs into the home. The fiber is connected to an Optical Network ...



If you used different wires, you'll have to keep track of which wires you connected to the NID terminals and connect those same wires to the corresponding jack terminals. Strip the wires, ...

Contact Us

For more information, pricing, or custom network solutions, please contact us:

Website: <https://www.hashherbcafe.co.za>

Email: hello@hashherbcafe.co.za

Phone: +27 63 814 7295

Address: 15 Galaxy Road, Linbro Business Park, Johannesburg, 2065, South Africa

This document is for informational purposes only. Specifications subject to change without notice.

