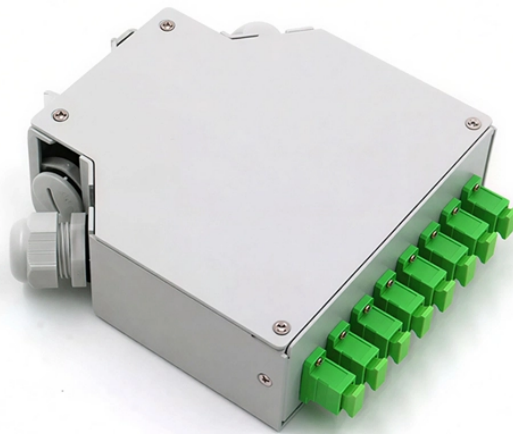


How to connect a bobbin to a distribution box



Overview

In this article, I'll teach you how to wire a Power Distribution Block (PDB) to distribute electricity from a single input source to multiple pieces of equipment in your branch circuit. This guide provides step-by-step instructions for connecting a distribution box and highlights key factors to consider during installation. We will focus on the critical parts of the system, from basic components to step-by-step assembly procedures. It includes isolator, RCCB (Residual current circuit breaker) or RCD (Residual-current device) devices, protective fuses or MCB's (Miniature Circuit Breaker). An electrical panel box, also known as a breaker box or a distribution board, is a crucial component of any electrical system.

How to connect a bobbin to a distribution box



Through the MCB phase lines are distributed to electrical wiring for lighting, fixed devices, and power distribution points. This type of arrangement is the commonly used method of distribution ...



Learn how to connect a distribution box with this easy-to-follow, step-by-step guide. From tools and materials needed to common installation mistakes and solutions, this comprehensive article will ...



As a DIY enthusiast or an electrician, it is essential to understand how to wire a DB board. A DB board, which stands for Distribution Board, is a central component in your home's electrical system. It routes ...



Hey, in this article we are going to see the Single Phase Distribution Box Wiring Diagram and Connection Procedure. A distribution board or distribution box is where the main power supply is ...



Explore a comprehensive guide to residential electric meter box wiring diagrams, offering clear instructions for safe and efficient installation.



In this video, we'll walk you through the process of wiring a home distribution box with a detailed connection diagram.



Learn how to install a distribution box safely and correctly. Covers wiring, placement, standards, and expert tips for a compliant setup.



In this article, I'll teach you how to wire a Power Distribution Block (PDB) to distribute electricity from a single input source to multiple pieces of equipment in your branch circuit.



METHOD STATEMENT FOR Electric panel and distribution box installation and termination - Free download as PDF File (.pdf), Text File (.txt) or read online for free. This document provides a method ...



Find out how to properly wire an electrical panel box with a comprehensive diagram and step-by-step instructions.

Contact Us

For more information, pricing, or custom network solutions, please contact us:

Website: <https://www.hashherbcafe.co.za>

Email: hello@hashherbcafe.co.za

Phone: +27 63 814 7295

Address: 15 Galaxy Road, Linbro Business Park, Johannesburg, 2065, South Africa

This document is for informational purposes only. Specifications subject to change without notice.

