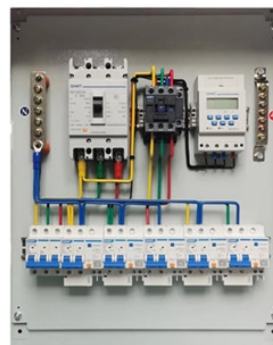
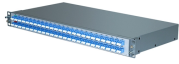


## How to configure an access layer switch



## How to configure an access layer switch



In this section, you configure inter-VLAN routing using Layer 3 switches. Modern enterprise networks rarely use router-on-a-stick because it does not scale easily to meet requirements. In these very ...



ACL access control lists are indispensable for building a security-compliant network, but configuring ACLs on Layer 3 switches is not known to some of the primary network administrators who are new ...



The uplink port on the access switch should be configured identically, otherwise VLAN mismatches will result. The access switch will also need to be configured appropriately to place client traffic in the ...



In this post, I will show you how to configure layer 3 switch in the packet tracer. By the end of this post, you will have the knowledge and skills to:



Technology Overview and other devices in the work environment. The primary Access Layer switches are designed to be housed in 19-inch equipment racks, in a wiring closet



Layer 2 switches appear transparent to higher layer protocols, transferring frames between the data link layers of the networks to which they are attached. A Layer 2 switch accesses each physical link ...



To prepare a switch for remote management access, the switch must be configured with an IP address and a subnet mask. Keep in mind that to manage the switch from a remote network, the switch must ...



This lesson explains how to configure Layer 3 Etherchannel on Cisco IOS Catalyst Switches.



In this video, you will learn how to configure an access list. Everything is explained step by step.



Learn how to configure Cisco EtherChannel on Catalyst 9000 switches using LACP for access-layer uplinks. Step-by-step guide with commands, verification, and troubleshooting tips.



One simple and popular switch design scenario will be shown in the following tutorial. This scenario will fit most SMB networks (or even bigger ones) that have a few layer 2 VLANs and consequently a few ...



This document provides instructions for configuring inter-VLAN routing between VLANs 10 and 20 on a Cisco layer 3 switch. It describes creating the VLANs and ...

## Contact Us

For more information, pricing, or custom network solutions, please contact us:

Website: <https://www.hashherbcafe.co.za>

Email: [hello@hashherbcafe.co.za](mailto:hello@hashherbcafe.co.za)

Phone: +27 63 814 7295

Address: 15 Galaxy Road, Linbro Business Park, Johannesburg, 2065, South Africa

This document is for informational purposes only. Specifications subject to change without notice.

