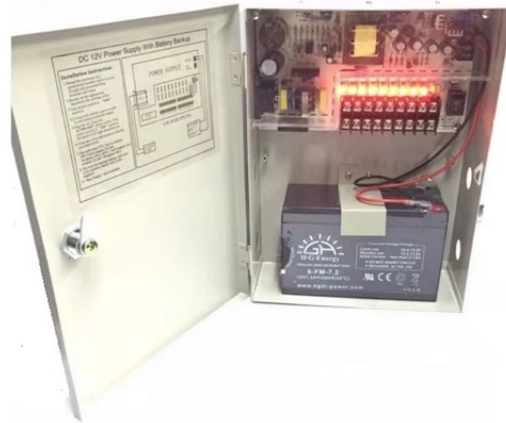


How to configure a charging distribution box



How to configure a charging distribution box



It is necessary to make sure that the charging system DC output is disconnected in case of operation inside the charging system. The main inputs of the charging system must also be disconnected.



Learn the difference between EV charger distribution boxes and standard boards. Understand EV consumer units, surge protection, UK/EU standards, and how to ...



This can be accomplished in one of two ways: the power conversion can happen inside the vehicle using its onboard charger (AC charging) or externally to the vehicle (DC charging). The following diagrams ...



With standardized outdoor distribution boards from ABB it is easier than ever to configure, order and install the right solution for each individual ABB charger.



Discover how electrical panels power EV charging stations safely and efficiently. Learn about components, load balancing, safety, and future-proofing tips.



Designing electrical infrastructure to support current and future needs for EV charging helps avoid costly modifications later as demand for EV charging grows. Consider these methods to prepare a site for ...



To configure an AC Business EV charging box, you will need a LAN connection to the web server. Read the knowledge article to learn how to do so [AC BUSINESS: connecting to the web server](#). Set the ...



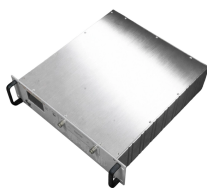
The power distribution process of the charging station includes two parts: power transformers from 10KV to 380V, and from the 380V transformer end to the charging pile. The most important power ...



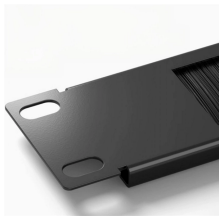
EV charger equipment and facilities shall be designed, installed, maintained and operated in accordance with Electricity Ordinance and other statutory requirements, applicable standards, regulations and ...



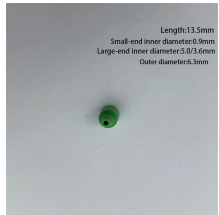
The EVCS can also be set up and configured via the built-in WiFi AP (Access Point) and the web interface. The necessary steps are explained in the following sections.



DC wallboxes charging landscape. This advanced technology enables bi-directional charging, allowing electricity to flow from the vehicle's battery back to the grid, effectively turning the vehicle into an ...



Referring to the provided circuit diagram, you'll find a standard EV charger setup, showcasing both the main electrical panel and the interconnected ...



The sizing of the circuit supplying one connecting point (mode 1 and 2) or one EV charging station (mode 3 and 4) should be done according to the maximum charging current (or a lower value, ...



Learn the difference between EV charger distribution boxes and standard boards. Understand EV consumer units, surge protection, UK/EU standards, and how to choose the right EV charging panel ...

Contact Us

For more information, pricing, or custom network solutions, please contact us:

Website: <https://www.hashherbcafe.co.za>

Email: hello@hashherbcafe.co.za

Phone: +27 63 814 7295

Address: 15 Galaxy Road, Linbro Business Park, Johannesburg, 2065, South Africa

This document is for informational purposes only. Specifications subject to change without notice.

