

How to calculate the number of joints in a cable tray



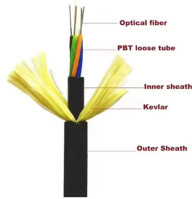
Overview

Calculate cable tray fill ratio, weight loading, and derating factors for multi-standard compliance. This calculator features an interactive interface with advanced visualizations. Is there anywhere else in the NEC book that says cable tray has to have an expansion splice plate every so many feet?

Alls I have found is 392. Save your cable tray sizing calculator results as branded PDF. How do I calculate cable tray fill?

Cable tray fill is the percentage of the tray's cross-section occupied by cables.

How to calculate the number of joints in a cable tray



The weight per meter (foot) of the cable multiplied by the number of meters (feet) in the vertical drop will, in many cases, exceed the load carrying capacity of the cable tray component, such as the one or ...



All the technical information developed by the 1973 NEC® Technical Subcommittee on Cable Tray for Article 318 - Cable Trays was based on cable trays with side rails and this technical information is still ...



This guide covers the critical steps, from selecting the right electrical cable tray and performing accurate cable fill calculations to managing a safe cable pull through and ensuring all bonding and grounding ...



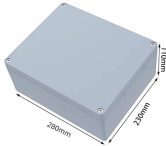
2) Factors like material, temperature range, and installation temperature determine the required gap size and spacing of expansion joints. For a 100°F temperature differential, steel trays require a joint every ...



NEMA has a free PDF installation guide that gives you the information needed to calculate how many expansion joints are needed. The code never tells you that you need one every so many ...



Calculate cable tray size, zip ties, and total cable length for structured cabling runs. Get tray width by cable type, count, pathway style, and NEC fill.



Use this cable tray sizing calculator to check fill %, select tray size, and comply with IEC 61537 & NEC 392 with formulas, example and checklist.



Learn how to manage thermal expansion and contraction in cable tray systems with expert tips on expansion joints, guides, and spacing to ensure long-term structural integrity.



Expansion joints must be installed at regular intervals along the cable tray system, especially in areas where significant temperature changes occur. The distance between expansion ...



Calculate cable tray fill ratio, weight loading, and derating factors for multi-standard compliance. This calculator features an interactive interface with advanced visualizations. Open the full calculator for ...

Contact Us

For more information, pricing, or custom network solutions, please contact us:

Website: <https://www.hashherbcafe.co.za>

Email: hello@hashherbcafe.co.za

Phone: +27 63 814 7295

Address: 15 Galaxy Road, Linbro Business Park, Johannesburg, 2065, South Africa

This document is for informational purposes only. Specifications subject to change without notice.

