

## How should the primary distribution box be installed



### Overview

Choose the right box based on environment (indoor/outdoor), load capacity, and durability. Check for proper IP/NEMA ratings and material quality. First of all, you need to have a simple understanding of the definition of a distribution box, and make it clear which kind of distribution box you want to install. If it's done poorly, you risk short circuits, fire hazards, or system failure. Done right, it ensures safety, compliance, and long-lasting performance. A distribution box, also known as a. In modern electrical systems, cable distribution boxes (also known as electrical distribution boxes or distribution boxes) play a crucial role as the key hub for managing, distributing, and protecting circuits. Its primary function is to evenly distribute effluent to multiple drain lines, ensuring that.

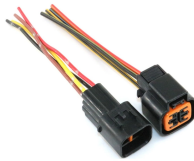
## How should the primary distribution box be installed



Distribution boxes, switch boxes should be installed in dry, ventilated and room temperature places; shall not be installed in the role of serious damage to the gas, smoke, vapour, ...



These cables may be buried directly in the ground, or may be installed in ducts buried in the ground. Concrete or metal markers are often installed at intervals to show the location of the cables.



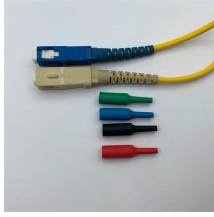
Find out how to properly wire an electrical panel box with a comprehensive diagram and step-by-step instructions.



Box installation: Place the cable distribution box on the installation surface, align with the expansion bolt position, and tighten the screw firmly. Ensure that the box is level and stable, without ...



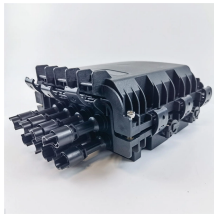
A single phase distribution box controls and protects home or office circuits. Learn its definition, main parts, and how it ensures electrical safety.



The distribution box should be installed in an area close to the power supply to reduce power loss and ensure safety. Avoid installing in a humid and ...



Understanding the key components of a distribution box helps you make informed decisions about installation and maintenance. Each element plays a specific role in ensuring safe ...



The distribution box should be installed in an area close to the power supply to reduce power loss and ensure safety. Avoid installing in a humid and corrosive environment to prevent ...



Learn how to install a distribution box safely and correctly. Covers wiring, placement, standards, and expert tips for a compliant setup.



Proper installation of the distribution box is crucial for its functionality. The box should be installed level and positioned at the correct height to allow for gravity flow of effluent into the drain ...



Understanding the key components of a distribution box helps you make informed decisions about installation and maintenance. Each element plays a specific role in ensuring safe ...



Before starting the installation, finding a proper place for putting the distribution box is crucial, because it largely decides the safety and convenience of maintenance. Let's see what factors ...



Proper installation of the distribution box is crucial for its functionality. The box should be installed level and positioned at the correct height to allow for ...

## Contact Us

For more information, pricing, or custom network solutions, please contact us:

Website: <https://www.hashherbcafe.co.za>

Email: [hello@hashherbcafe.co.za](mailto:hello@hashherbcafe.co.za)

Phone: +27 63 814 7295

Address: 15 Galaxy Road, Linbro Business Park, Johannesburg, 2065, South Africa

This document is for informational purposes only. Specifications subject to change without notice.

