

How much spacing should there be between horizontal cable trays



How much spacing should there be between horizontal cable trays



Spacing Standards: Electrical (power) and instrumentation (signal/control) cable trays should maintain a minimum vertical and horizontal distance. Industry standards often recommend at least 300mm (12 ...



Support spacing for cable trays must align with the manufacturer's instructions, as outlined in NEC 392.30 (A). Generally, standard trays require supports every 6 to 10 feet, while ...



Follow Span Ratings: Every cable tray comes with a NEMA span rating (e.g., 8 feet, 10 feet, 20 feet). Never exceed the manufacturer's recommended distance between supports.



The NEC recommends a minimum clearance of 6 inches between trays, and a maximum fill capacity of 50%.



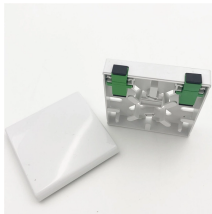
The horizontal safety distance between cable trays and ventilation ducts should generally be no less than 100 mm. In some projects, especially where airflow is critical, this distance may be ...



The NEC recommends a minimum clearance of 6 inches between trays, and a maximum fill capacity of 50%.



According to NEC Article 392.10 (B) (1) (c), the maximum allowable rung spacing for cable trays supporting these sizes of single conductor cables is 9 inches (229 mm).



The NEC requires that cable trays must be supported by members at an interval specified by the cable tray manufacturer, but not more than 5 feet for horizontal runs to support the weight of ...



Cable Tray Support Span: The distance between supports is a critical calculation. The cable tray support span must be determined based on the manufacturer's load capacity chart and the total anticipated ...



When two sets of cable trays are installed on the same beam, the net distance between the two sets of cable trays should not be less than 50 mm. When multi-layer installation of cable trays for laying ...



Strong hangers or brackets should be used to ensure that cable trays do not fall or hang. According to the regulations under NEC 392.30, these supports have to be put at a consistent ...

Contact Us

For more information, pricing, or custom network solutions, please contact us:

Website: <https://www.hashherbcafe.co.za>

Email: hello@hashherbcafe.co.za

Phone: +27 63 814 7295

Address: 15 Galaxy Road, Linbro Business Park, Johannesburg, 2065, South Africa

This document is for informational purposes only. Specifications subject to change without notice.

