

## How much fiber optic module should I buy



## How much fiber optic module should I buy



Explore our comprehensive SFP optical module selection guide for 2025. Learn about crucial factors like data rate, distance, fiber type, and compatibility to optimize your network ...



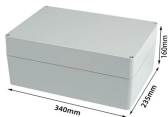
Learn how to choose the right fiber count for data centers, campuses, FTTH and backbone projects. Practical rules, sizing tips, and future-proof planning.



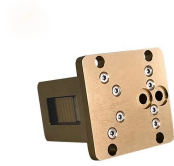
Home and business fiber optics projects typically range from a few hundred to several thousand dollars, depending on run length, fiber type, and labor needs. The main cost drivers are ...



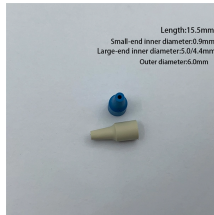
Learn how to assess your network environment, bandwidth needs, and other key requirements to make an informed decision about fiber optics.



One key factor is the number of cores, which impacts how much data you can transmit. This post will guide you through understanding fiber optic cores and selecting the perfect cable for ...



Explore our comprehensive SFP optical module selection guide for 2025. Learn about crucial factors like data rate, distance, fiber type, and ...



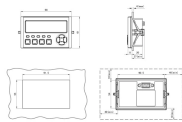
SFP 10GBASE modules are engineered to handle data speeds of 10 gigabits per second (Gbps), making them ideal for environments that require fast and reliable data transmission, such as data ...



Understand the core function, compare data rates (1G to 25G), learn critical compatibility rules, and follow our 5-step checklist for selecting the perfect SFP optical module for your network build.



Generally speaking, the number of optical cores in an optical fiber is the total number of equipment interfaces multiplied by 2, plus 10% to 20% of the spare quantity.



Expert advice on fiber optic installation, including cable length calculations, single mode vs. multi mode fibers, and environmental considerations.



Learn how to choose the right fiber optic module guide for SFP, SFP+, SFP28, and newer optics, with specs, checklists, pitfalls, and ROI.

## Contact Us

For more information, pricing, or custom network solutions, please contact us:

Website: <https://www.hashherbcafe.co.za>

Email: [hello@hashherbcafe.co.za](mailto:hello@hashherbcafe.co.za)

Phone: +27 63 814 7295

Address: 15 Galaxy Road, Linbro Business Park, Johannesburg, 2065, South Africa

This document is for informational purposes only. Specifications subject to change without notice.

