

How much does a Dawning AI server cost



Overview

Standard 3-5 year plans typically range from \$15,000 to \$40,000 per server, covering firmware, diagnostics, and parts replacement. Vendors like Supermicro offer flexible, OpEx-friendly options to help manage these expenses. AI servers, such as the HPE XD685 and Dell XE9680, equipped with eight NVIDIA H100 or H200 GPUs, consume over 7 kW per node, surpassing the 200-400 W baseline of traditional servers. The cost of an AI server data. Transparent pricing for GPU instances including RTX 4090, RTX 5090, RTX PRO 6000 and more. Use our calculator to estimate monthly costs for your AI workloads. Production-ready clusters from 16 to 2,000+ NVIDIA B200 or H100 GPUs. Deploy NVIDIA B200, H100, A100, or GH200 instances in minutes with self-serve, first-come. The truth is, there's no simple answer—just like building a house, the final cost depends on the complexity of what you're trying to build and the decisions you make along the way. Misestimating these factors can result in underutilized resources or bottlenecks, increasing total cost of ownership (TCO). UNIHOST provides dedicated AI servers with full resource control. Learn more in our Privacy Policy Track AI hardware prices across 24+ vendors.

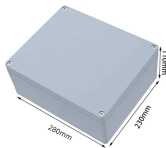
How much does a Dawning AI server cost



Explore the real costs of deploying AI-ready infrastructure, from GPU servers to advanced cooling and power delivery. Learn how to plan and optimize AI server ...



By Taylor Mills The Failure of Air Older “brownfield” data centers were designed for server racks consuming between 5 and 15 kilowatts (kW) of power. Today, the solid growth in AI ...



AI data center costs vary based on hardware, power, and location. Learn key expenses, cost-saving strategies, and investment insights for AI infrastructure.



Understand the factors influencing AI server price. Compare configurations and find the most cost-effective AI dedicated server for your ...



Explore pricing for on-demand Pods, Serverless, Clusters, and Network Storage.



Track AI hardware prices across 24+ vendors. Daily updated pricing for GPU servers, workstations, and accelerators from \$109 to \$500k+.



Deploy NVIDIA B200, H100, A100, or GH200 instances in minutes with self-serve, first-come first-access. Transparent pricing for on-demand GPUs, 1-Click Clusters, and private cloud. Spin up H100 and ...



Understand the factors influencing AI server price. Compare configurations and find the most cost-effective AI dedicated server for your research or business.



It has a total cost of around \$10,424 for a large volume buyer, including ~\$700 of margin for the original device maker. Memory is nearly 40% of the cost of the server with 512GB per socket, ...



Transparent GPU infrastructure pricing for datacenter operators and enterprises. On-demand and reserved capacity across RTX 4090, RTX 5090, RTX PRO 6000, L40, and more. Calculate costs for ...



A complete guide to AI infrastructure costs. We break down hardware, cloud, and data expenses, plus how to estimate, manage, and reduce them. Master your budget.



Explore the real costs of deploying AI-ready infrastructure, from GPU servers to advanced cooling and power delivery. Learn how to plan and optimize AI server data center costs for 2025.

Contact Us

For more information, pricing, or custom network solutions, please contact us:

Website: <https://www.hashherbcafe.co.za>

Email: hello@hashherbcafe.co.za

Phone: +27 63 814 7295

Address: 15 Galaxy Road, Linbro Business Park, Johannesburg, 2065, South Africa

This document is for informational purposes only. Specifications subject to change without notice.

