

## How many nodes can a network rack connect



### Overview

You can connect up to 14 Exadata X11M racks together before external RDMA Network Fabric switches are required. GB200 NVL is a rack scale solution for GPUs connected using NVLink. 9x 1RU NVL36 NVLink Switch trays. Cable cartridges and manifolds in the RU. Supported by a new multinode rack server chassis and server nodes, this solution is designed for: service providers building cloud platforms; manufacturers simulating new designs; retailers analyzing consumer trends; compute-intensive web and gaming back-end processing; and for data scientists. Professional cable management guide for 2026 network racks. Learn Cat6A requirements for Wi-Fi 7, PoE++ thermal management, SFP+ uplinks, and proper installation techniques for 10Gbps infrastructure. Each node features its own dedicated configurator, providing for multifaceted specification design. Advantage of energy efficient Multi-Node solutions versus individually. We introduce R2C2, a network stack for rack-scale com-puters that provides flexible and efficient routing and con-gestion control. We. Rack Scale Architectures (RSAs) are an innovative approach to data center design, focusing on integrating compute, storage, and networking within a cohesive structure known as rack nodes or pods. These pods typically

contain application storage, compute resources, and Top-of-Rack (ToR) networking.

## How many nodes can a network rack connect



Support for four nodes. Up to four Cisco UCS rack server nodes can populate this 2RU chassis. Up to 512 cores per chassis. With the AMD EPYC processor, industry-leading core density is achieved.



The plan was to build a multi-node Proxmox cluster inside the mini rack and then layer on a Talos Linux Kubernetes cluster on top of it. In this post, I will walk through how my mini rack ...



You can connect up to 14 Exadata X11M racks together before external RDMA Network Fabric switches are required. The diagram shows the RDMA Network Fabric architecture for two interconnected ...



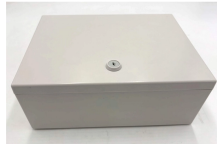
Modern network racks face new physical constraints: deeper switches, hotter PoE++ loads, and thicker Cat6A cabling. A standard 48-port ...



Modern network racks face new physical constraints: deeper switches, hotter PoE++ loads, and thicker Cat6A cabling. A standard 48-port PoE++ switch now generates 600W+ of ...



Scalability: Rack nodes/pods scale out into rows connected by high-speed leaf/spine networks, forming data superhighways that allow any node to reach any other node in three hops or less.



In the realm of network infrastructure, efficient organization and accessibility of devices are paramount. This ultimate guide delves into the world of networking racks, essential structures ...



Fabric-net: InfiniBand or Ethernet network that connects the GB200 NVL rack's Compute Fabric HCAs (typically ConnectX-7). This network is also referred to as the East-West or the Back ...



1U to 4U Multi-Node Servers - Solutions from Twin Node to 24 Nodes Extensive range of Multi-Node Servers - Supermicro MicroCloud, TwinPro & FatTwin with Gigabyte & Asus Branded. Configure ...



We introduce R2C2, a network stack for rack-scale computers that provides flexible and efficient routing and congestion control. R2C2 leverages the fact that the scale of rack topologies allows for low ...



With the modern CompactLogix platforms (5370 and 5380) you really only have to count the number of "nodes" in the controller organizer. All of the controllers support up to 250 or 256 ...

## Contact Us

For more information, pricing, or custom network solutions, please contact us:

Website: <https://www.hashherbcafe.co.za>

Email: [hello@hashherbcafe.co.za](mailto:hello@hashherbcafe.co.za)

Phone: +27 63 814 7295

Address: 15 Galaxy Road, Linbro Business Park, Johannesburg, 2065, South Africa

This document is for informational purposes only. Specifications subject to change without notice.

