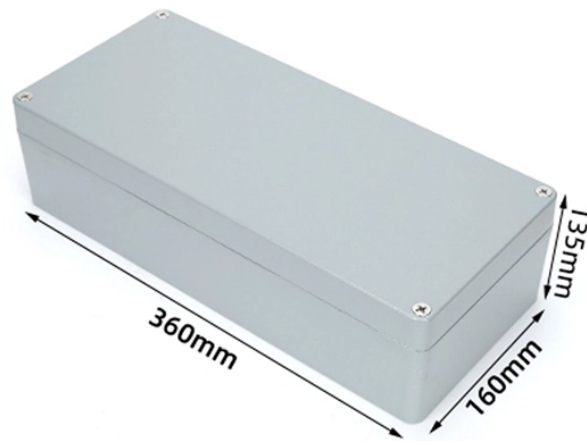


# How many circuits are used in a household electrical distribution box



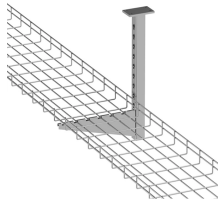
## Overview

A modern NEC-compliant home typically needs: 2,000 sqft / 3 bed / 2 bath: 18–22 circuits; 2,800 sqft / 4 bed / 3 bath: 24–30 circuits; 3,500+ sqft / 5 bed / 4 bath: 32–42 circuits. Covers general-purpose lighting circuits, small appliance circuits, laundry circuits, dedicated appliance circuits, and 240V equipment circuits for complete home electrical design. Calculations are for reference only. Always verify against NEC and local codes before installation. Paul, MN requires a minimum of six circuits in addition to those required for lighting. Similarly, the state. A common starting point for a typical home is often between 10 and 20 residential circuit breakers, but this can easily increase. Navigating your home's electrical panel can seem a bit like deciphering a secret code, especially when you're trying to figure out what's what. Just plug in your wattage and voltage—let it handle the decimals.

## How many circuits are used in a household electrical distribution bo



Yeah, that's the heart of your electrical system. Getting its sizing right isn't just about following rules—it's about safety, efficiency, and avoiding those annoying tripped breakers at 2 AM.



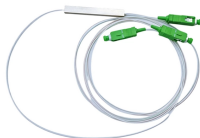
The NEC doesn't specify a minimum total circuit count, but it does mandate specific circuits for specific purposes. When you add them all up for a modern home, the number is always more than ...



Many modern appliances, such as water heaters, clothes dryers, stoves, and central air, require their own circuits. Home Depot estimates that the average home has between 20 and 30 ...



The following example will show how to calculate the number of branch circuits, wire sizes per branch circuit, feeders, service entrance, and the overcurrent protection for all wiring in a one ...



It typically includes a main breaker (or switch) that can disconnect all power from the panel, individual circuit breakers or fuses for each branch circuit, and grounding connections.



At the heart of your home's electrical system lies this crucial component, often called a breaker box or electrical panel. This is where the power coming into your house is distributed to all ...



Recalling this basic information is necessary to determine the exact number of breakers required in a panel board, load center, or distribution board. The available voltage levels in a single ...



Behind the cover plate surrounding all the panel's switches, you'll find three large wires entering the box from the main power line and many smaller wires that connect individual circuit ...



The count of circuits present in an electrical panel can diverge, but it's routine to encounter panels designated for residential use with anywhere between 20 and 40 circuit slots.



We will demystify the NEC 's core requirements for residential circuits, breaking down the process of Load Calculation so you can understand exactly what your home needs—from dedicated ...



Many modern appliances, such as water heaters, clothes dryers, stoves, and central air, require their own circuits. Home Depot estimates that the ...

## Contact Us

For more information, pricing, or custom network solutions, please contact us:

Website: <https://www.hashherbcafe.co.za>

Email: [hello@hashherbcafe.co.za](mailto:hello@hashherbcafe.co.za)

Phone: +27 63 814 7295

Address: 15 Galaxy Road, Linbro Business Park, Johannesburg, 2065, South Africa

This document is for informational purposes only. Specifications subject to change without notice.

