

## How many beam splitters does an optical distribution box typically have



### Overview

The centralized splitting structure generally uses a 1×32 splitters in the central office. The central office CO may be located anywhere in the network. The splitter input port is directly connected via a single fiber to a GPON/GEAPON optical line terminal (OLT) in the. In this guide, you'll learn how fiber splitters function in PON networks, the difference between PLC and FBT types, and how to choose the best model for your rollout in 2025. What Are Fiber Optic Splitters in PON?

Fiber splitters are passive devices that divide one optical input signal into. In modern FTTH (Fiber to the Home) and optical communication networks, three types of fiber distribution products are widely used: Splitter Distribution Box, ODF (Optical Distribution Frame), and Fiber Terminal Box. This guide will walk you through the following parts: An Even Splitting splitter.

## How many beam splitters does an optical distribution box typically



This foundational document explores how splitter architecture choices impact fiber counts, splicing, and customer connections while setting the stage for a more detailed follow-up analysis of ...



They now include built-in splitters for efficient signal distribution, optimized cable management systems to reduce stress on fibers, and advanced sealing techniques to prevent the ingress of water and dust, ...



This foundational document explores how splitter architecture choices impact fiber counts, splicing, and customer connections while setting the stage for ...



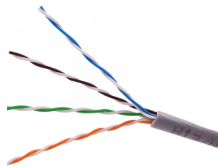
OverviewTypesSplitting ratio principleAdvantages and disadvantagesSee also



From the structure, splitter placement in ODN is very crucial. there are generally two types of splitter placement in ODN network, centralized splitting and cascading splitting.



Balanced (2xN) splitters consists of 2 input fibers and N output fibers which divide the power of the optical signal proportionally. They are mainly used for non-simultaneous redundancy.



The centralized approach uses a single high-ratio splitter (e.g., 1:32 or 1:64) located in a central outdoor enclosure—typically an Optical Distribution Terminal (ODT) or Fiber Distribution Hub ...



If splitters are moved closer to the users, some ports must be left open for future expansion, meaning that OLT port will support fewer than the maximum number of users - about 24 ports being used ...



Scalable Capacity: Supports up to 18 drop ports and multiple splitter sizes in one IP68-rated enclosure. Choose Even Splitting (with or without pre-connectorized boxes) for star- shaped, short-distance ...



In this guide, you'll learn how fiber splitters function in PON networks, the difference between PLC and FBT types, and how to choose the best model for your rollout in 2025.



In its simplest form, an optical beam splitter splits a light source in two by using two back-to-back prisms. For the XGS-PON standard, up to 256 splits are supported on an XGS-PON port.

## Contact Us

For more information, pricing, or custom network solutions, please contact us:

Website: <https://www.hashherbcafe.co.za>

Email: [hello@hashherbcafe.co.za](mailto:hello@hashherbcafe.co.za)

Phone: +27 63 814 7295

Address: 15 Galaxy Road, Linbro Business Park, Johannesburg, 2065, South Africa

This document is for informational purposes only. Specifications subject to change without notice.

