

How is the Botswana Unicom AI server

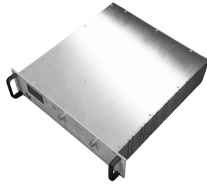


Overview

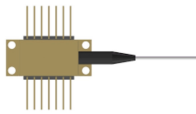
Based on the "AI Family Cloud" smart home platform, UniCom highlighted three key products: the UniCom CloudSmartPhone, which integrates leading AI models like UniAland DeepSeek, combining AI, entertainment, and gaming ecosystems catering to personal and family needs;. Based on the "AI Family Cloud" smart home platform, UniCom highlighted three key products: the UniCom CloudSmartPhone, which integrates leading AI models like UniAland DeepSeek, combining AI, entertainment, and gaming ecosystems catering to personal and family needs;. In a significant move for the AI computing industry, UNICOM Engineering unveiled its latest server solution—the XE9680-IR. This powerhouse 6U platform isn't just another GPU server; it's a glimpse into the future of sustainable AI processing. Engineered for AI Excellence Let's talk specs, and. This profile summarises the Key Insights arising from the completion of the Readiness Assessment Methodology (RAM) for Botswana, provides context through the Country Landscape. Botswana's Country Report are publicly available and can be downloaded below. The Botswana government, through the. Welcome to the UNICOM Intelligence documentation, where you can find information about how to install, maintain,

and use UNICOM Intelligence. On March 3, 2025, at MWC 2025, UniCom presented its latest digital intelligence innovations under the theme "5G-A Empowering, AI Transforming, Digital Living", showcasing a powerful vision for the future of connectivity. The company highlighted advancements in AI capabilities and. With UNICOM Engineering, a Dell Titanium Partner, the Agreement Positions ZutaCore's Waterless, Direct-to-Chip Liquid Cooling as "the" premier liquid cooling solution starting with Dell XE9680 Servers with NVIDIA H100/200 ZutaCore®, a leading provider of direct-to-chip, waterless liquid cooling. Abstract: This study seeks to provide insights into Botswana's AI readiness landscape. It was achieved by analysing secondary data from the Oxford Insights 2022- Government AI Readiness Index (AIRI).

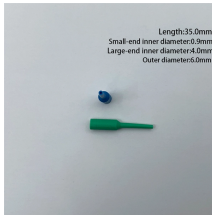
How is the Botswana Unicom AI server



This article is the first in a series of reflections that explore the emotional, political, infrastructural, and ethical terrain that underpins AI adoption ...



We're thrilled to announce our collaboration with UNICOM Engineering, combining the power of Dell Technologies PowerEdge server technology and our single-phase #immersioncooling pod, the...



Botswana's digital infrastructure is steadily improving, with mobile connectivity particularly strong and the country showing growing interest in data-centre investment.



In a significant move for the AI computing industry, UNICOM Engineering unveiled its latest server solution—the XE9680-IR. This powerhouse 6U platform isn't just another GPU server; ...



Its HyperCool technology - a direct-on-chip, waterless, direct liquid cooling solution - enables the highest sustained performance, server densification, and reduced power usage, which is critical for ...



Welcome to the UNICOM Intelligence documentation, where you can find information about how to install, maintain, and use UNICOM Intelligence.



MTP MPO SC-Type Fiber Adapter

UniCom is developing "Tone," an intelligent digital assistant built on its AI service platform. It will provide users a seamless experience across various devices, from smart TVs to smartphones.

Rear of the optical fiber distribution box



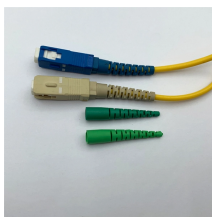
When comparing Botswana to other leading economies in Africa, such as South Africa, Kenya, and Nigeria, Botswana falls behind in terms of government AI readiness.



This article is the first in a series of reflections that explore the emotional, political, infrastructural, and ethical terrain that underpins AI adoption in Africa, starting with Botswana.



The Submer SmartPod EXO 200S, paired with UNICOM Engineering immersion-ready servers powered by 5th Generation Intel Xeon Scalable processors, delivers unparalleled ...



Huawei will support China Unicom in developing AI computing backbones and intelligent agent services to enable digital and intelligent industry transformation and empower its principal ...

Contact Us

For more information, pricing, or custom network solutions, please contact us:

Website: <https://www.hashherbcafe.co.za>

Email: hello@hashherbcafe.co.za

Phone: +27 63 814 7295

Address: 15 Galaxy Road, Linbro Business Park, Johannesburg, 2065, South Africa

This document is for informational purposes only. Specifications subject to change without notice.

