

Household Primary Distribution Box Configuration Standards



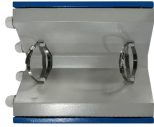
Overview

Check for proper IP/NEMA ratings and material quality. Ensure safe placement: install in dry, accessible areas with good ventilation and at appropriate height (typically ~1. Practice good wiring: secure grounding, neat cable management, proper insulation, and correct wire gauge and. This article guides you through selecting a distribution box that is both affordable and safe, emphasizing key features, configuration, and practical considerations. Safety is the top priority when choosing a distribution box. The distribution box must be able to handle the electrical load safely. Household distribution boxes are essential components in modern electrical systems, providing a centralized location for managing electrical circuits within a home. While many families are familiar with these boxes, there is often a lack of understanding regarding their specifications and proper. Finally, choose safety devices like RCBOs and Surge Protection Devices (SPD) for the best protection against faults and lightning. What is a Distribution Box, Consumer Unit, and Electrical Panel?

Many people feel confused by. PLEASE KEEP SAFETY FIRST - CALL YOUR

LOCAL FPL CONSTRUCTION OFFICE FOR AN APPOINTMENT TO DISCONNECT THE SERVICE AND REMOVE THE SEAL/METER. REFER TO SECTION III-I OF THESE ELECTRIC SERVICE STANDARDS REGARDING THE EXCEPTION ALLOWED BY FPL. The adoption of DERs and Evs may require customer service panel upgrades for older residential homes based on customer need. This specification shall be used in conjunction with the latest revision of the.

Household Primary Distribution Box Configuration Standards



Installing a household distribution box requires careful attention to specifications and safety guidelines. Understanding these parameters is vital for ensuring the safety and efficiency of ...



A well-chosen distribution box ensures the safety and efficiency of your household electrical system. This article guides you through selecting a distribution box that is both affordable and safe, ...



This publication, FPL's Electric Service Standards (ESS), is intended to furnish information often required by customers and their agents (builders, architects, engineers, electricians, etc.) to receive ...



This document represents the minimum requirements and specifications for the installation of an electrical underground residential distribution system to be transferred to Oncor Electric Delivery ...



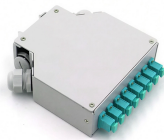
At Lianxinda, we've helped thousands of families choose the right home electrical boxes for over a decade. Here's a simple breakdown to make your decision stress-free.



Learn how to choose the right home distribution box with our expert guide. Compare circuit capacity, IP ratings, breaker types & avoid common mistakes.



Learn how to install a distribution box safely and correctly. Covers wiring, placement, standards, and expert tips for a compliant setup.



A well-chosen distribution box ensures the safety and efficiency of your household electrical system. This article guides you through selecting a distribution box that is both affordable ...



These instructions define the areas in which assistance may be given to a primary customer to coordinate the customer's and DTE Electric systems, to increase the operating safety of high voltage ...



Connecting DERs for Backup Power and Resilience as solar with battery energy storage to power their home during grid outages. This generally requires hysically disconnecting from the ...

Contact Us

For more information, pricing, or custom network solutions, please contact us:

Website: <https://www.hashherbcafe.co.za>

Email: hello@hashherbcafe.co.za

Phone: +27 63 814 7295

Address: 15 Galaxy Road, Linbro Business Park, Johannesburg, 2065, South Africa

This document is for informational purposes only. Specifications subject to change without notice.

