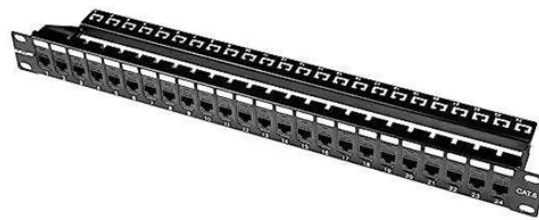


## Hot Melting Pipe for Fiber Optic Cable



## Hot Melting Pipe for Fiber Optic Cable



Whether you need electrical insulating tubing, wire harness tubing, heat shrink cable accessories, or other electrical application tubing products and cable identification products, we are a qualified ...



A specially designed cross-linked Clear Heat Shrinkable tubing, with Clear fusion tubing liner, providing protection to fiber optical splices. Available with single fiber and ribbon fiber. Customized designs are ...



These heat shrinkable tubes provide durable, moisture-resistant, and reliable protection for fiber optic splices, ensuring long-term network stability and performance. Each pack contains 100 pieces, ...



Heat Shrinkable Tube consists of transparent heat shrinkable casing (Outer tube), clear hot melt tube (inner tube) and 304 stainless steel rod (reinforcing rib), it is specially designed for optical fiber fusion ...



Temperature and moisture resistance: After heat shrinking of the ...



Temperature and moisture resistance: After heat shrinking of the hot melt tubing, it has good characteristics of high temperature resistance and moisture resistance. No obstruction to fiber optic ...



Optic Fiber Heat Shrink Tube is a vital component used to safeguard fiber optic splicing elements. It is composed of cross-linked polyolefin, a hot melt tube, and a steel rod. This tube is designed to ...



Types of Fiber-Optic Protection Tubes Fiber-optic protection tubes play a vital role in safeguarding delicate optical cables from environmental hazards, mechanical stress, and chemical exposure. The ...



□Protect Fiber Fusion Points□Clear sleeve makes it easy to detect splices before shrinkage, The fiber optic heat shrink tubes are tight and the metal support maintains its strength to prevent the fiber from ...

## Contact Us

For more information, pricing, or custom network solutions, please contact us:

Website: <https://www.hashherbcafe.co.za>

Email: [hello@hashherbcafe.co.za](mailto:hello@hashherbcafe.co.za)

Phone: +27 63 814 7295

Address: 15 Galaxy Road, Linbro Business Park, Johannesburg, 2065, South Africa

This document is for informational purposes only. Specifications subject to change without notice.

